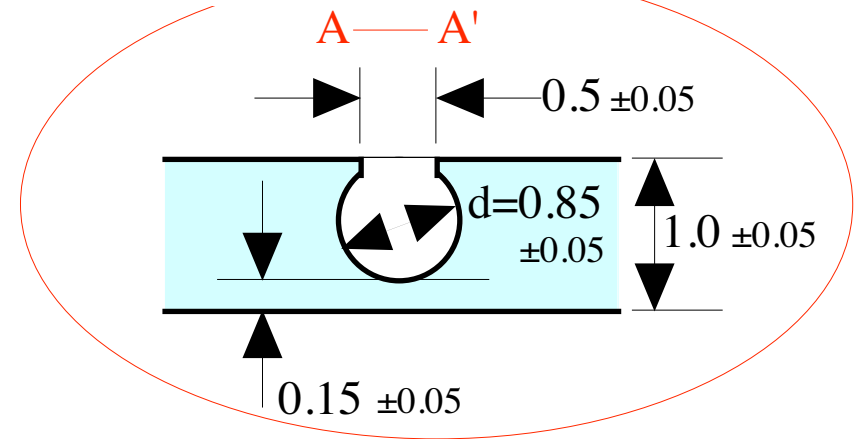
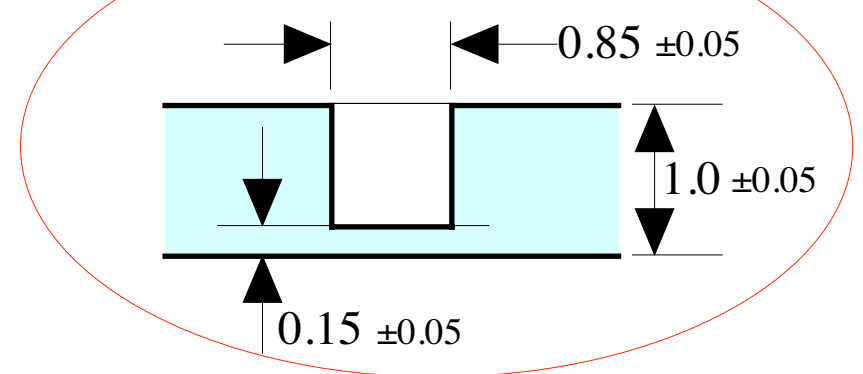


Cross Section of Groove

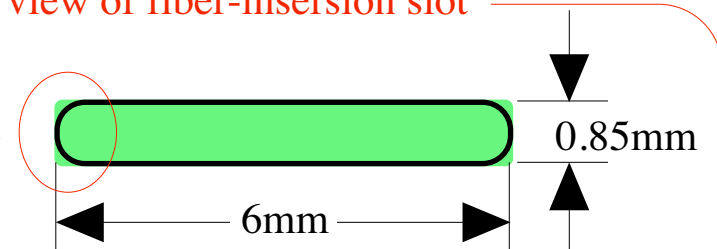


Cross Section of Groove
B — B' (fiber-inserion slot)



Magnified view of fiber-inserion slot

The ends can have appropriate round.



Individual Tile (Plastic Scintillator)
 Unit = mm
 Precision = **0.1mm** unless specified.
 2003-July-31 Y.Fujii (KEK)