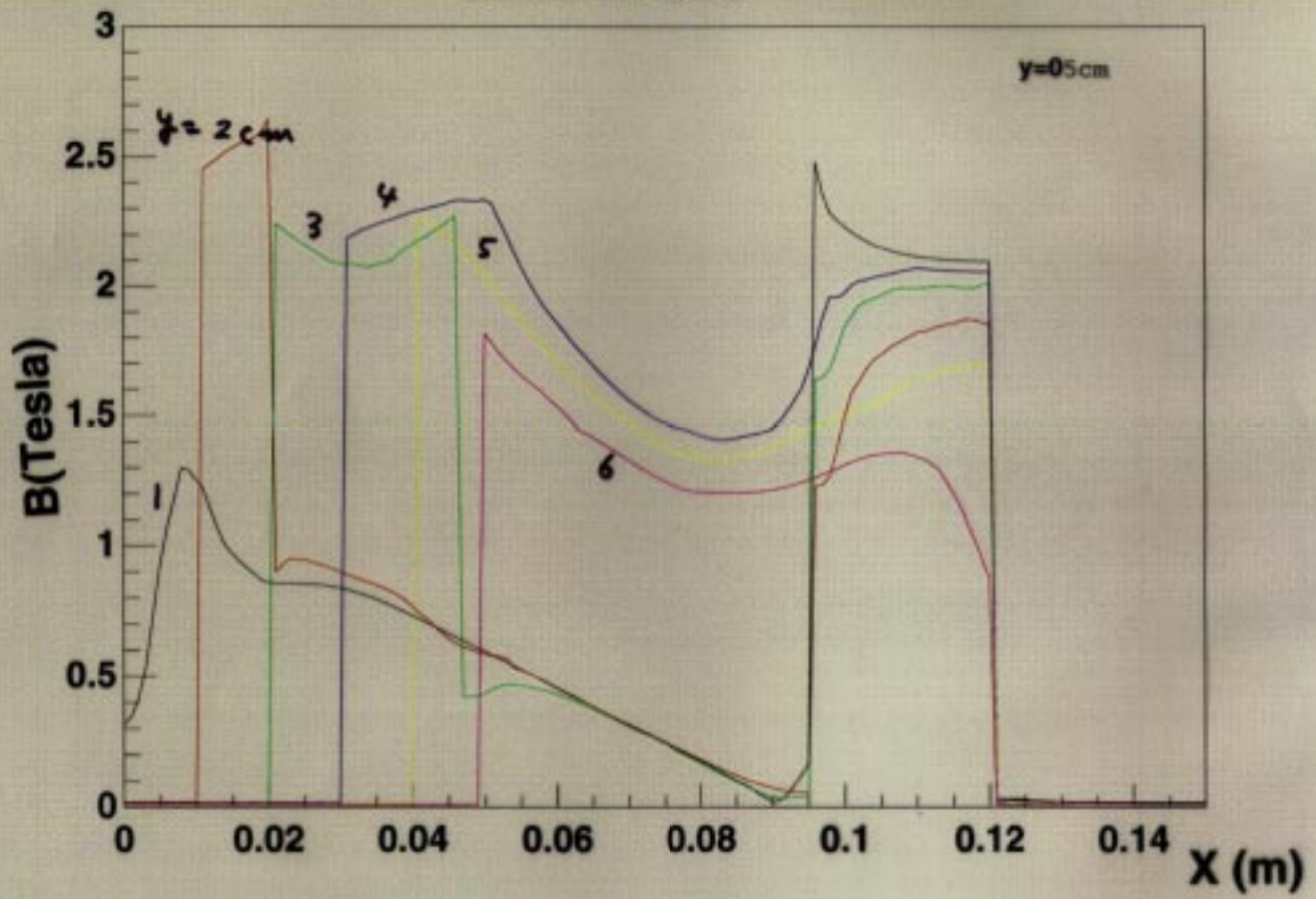
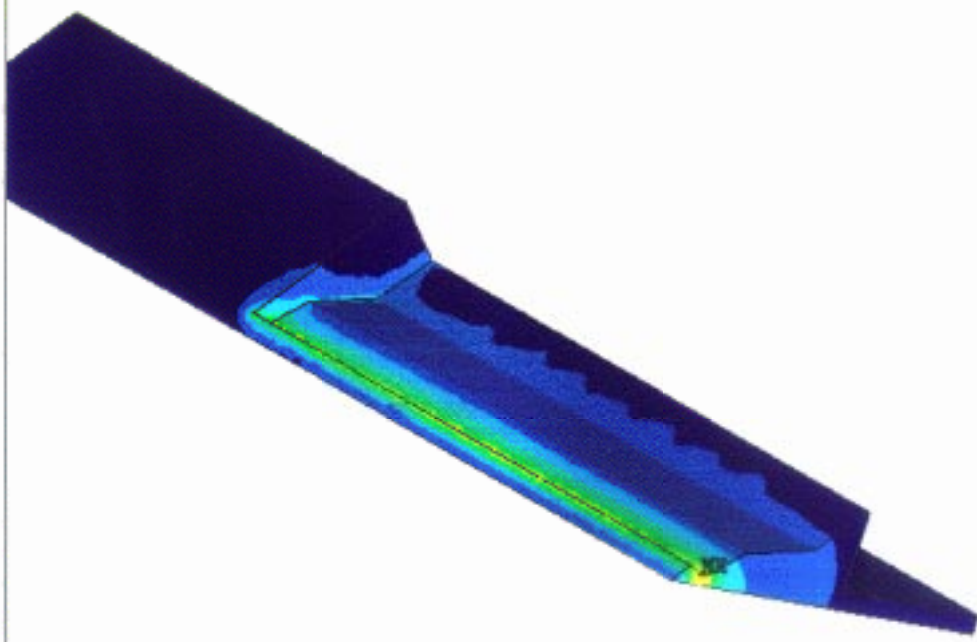


Bsum in QCS



1



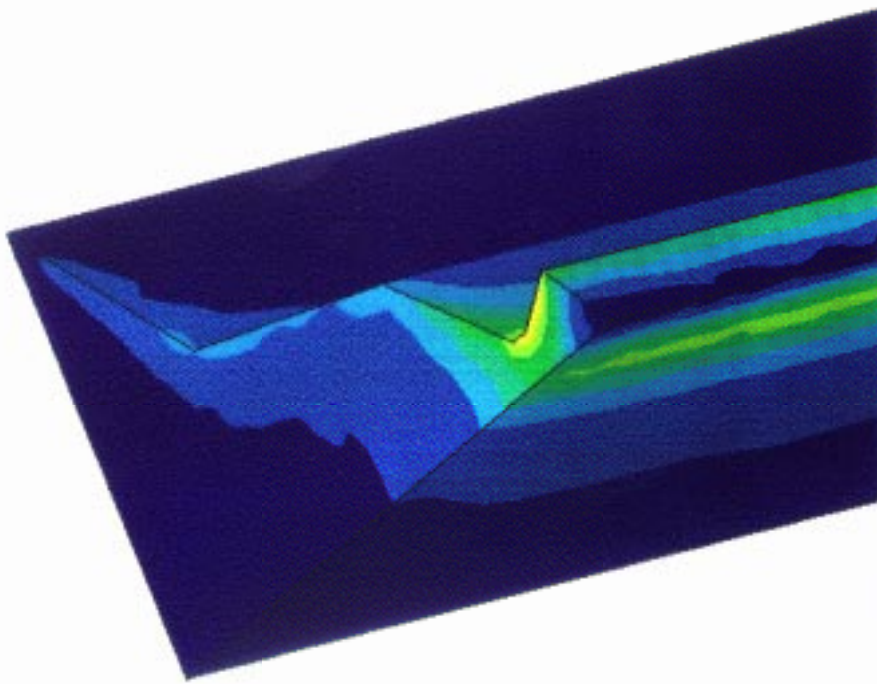
```
ANSYS 5.4  
JUN 28 1999  
14:01:56  
AVG ELEMENT SOLUTIC  
STEP=1  
SUB =1  
TIME=1  
BSUM (AVG)  
SMN =.419E-04  
SMX =2.253  
  
KV =-.6027  
YV =.1691  
ZV =.7798  
*DIST=.122276  
*XF =.066527  
*YF =-.012246  
*ZF =.032607  
A-ZS=-17.58  
Z-BUFFER  
          .419E-04  
          .25033  
          .500617  
          .750905  
          1.001  
          1.251  
          1.502  
          1.752  
          2.002  
          2.253
```



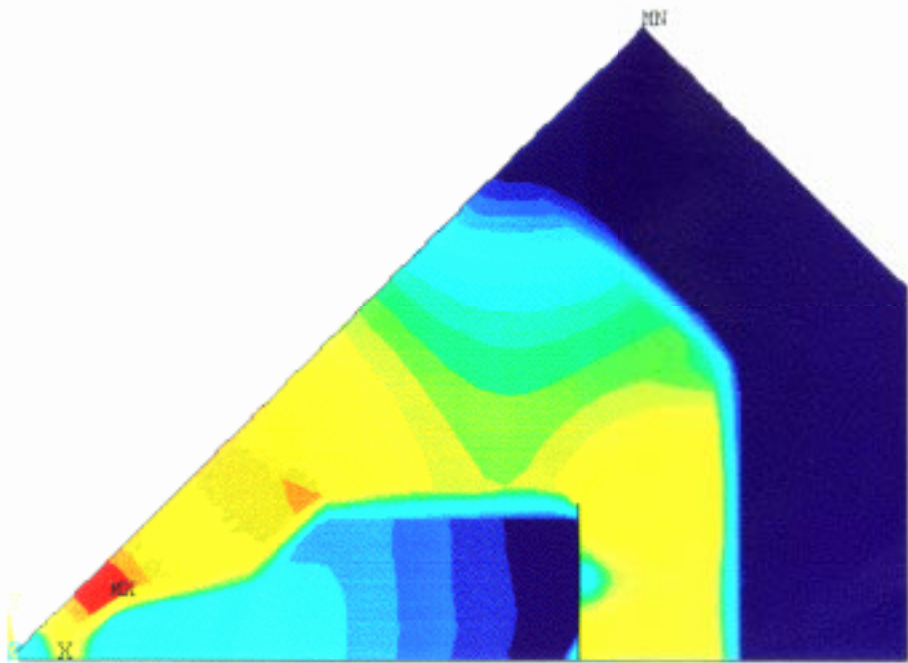
JUN 28 1999
14:30:35
AVG ELEMENT SOLUTIO
STEP=1
SUB =1
TIME=1
BSUM (AVG)
SMN =.11409
SMX =2.253

XV =-.8308
YV =-.2068
ZV =-.5168
*DIST=.026076
*XF =.078046
*YF =.018485
*ZF =-.033927
A-ZS=21.65
Z-BUFFER

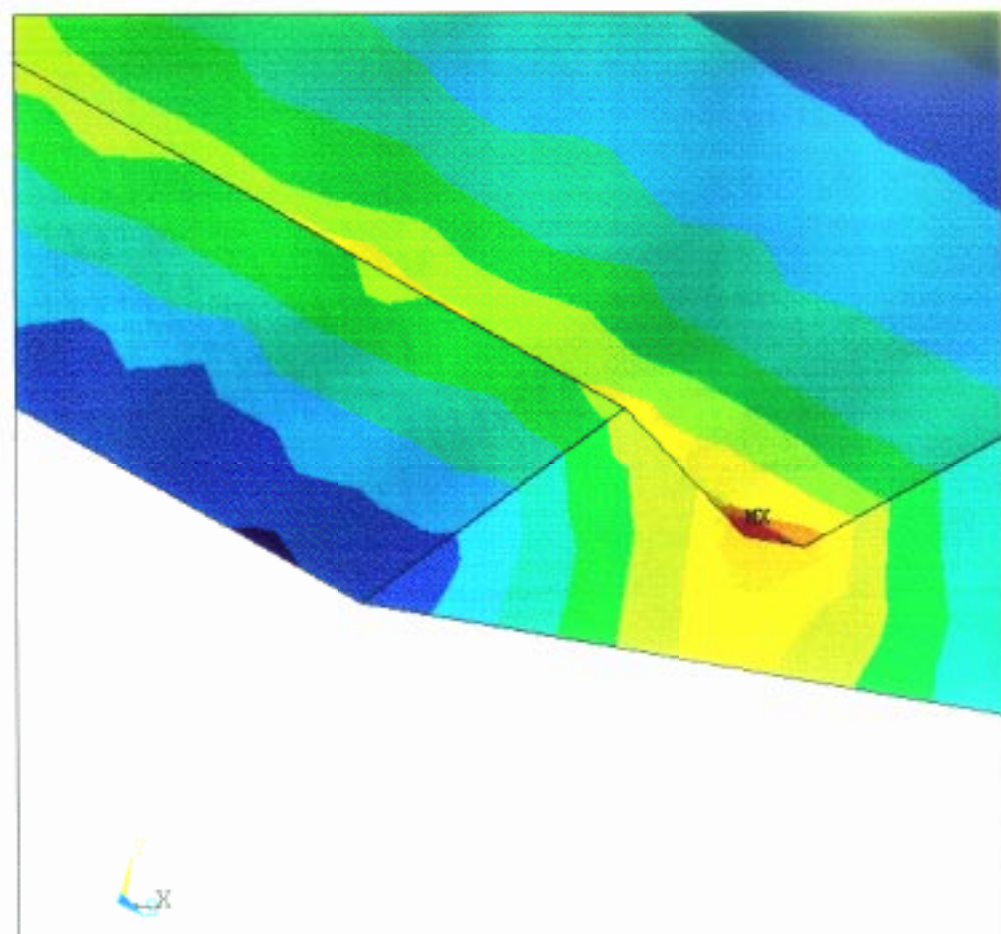
■	.11409
■	.351706
■	.589322
■	.826937
■	1.065
■	1.302
■	1.54
■	1.777
■	2.015
■	2.253



1



ANSYS 5.4
JUL 1 1999
13:22:57
AVG ELEMENT SOLUTIO
STEP=1
SUB =6
TIME=1
BSUM (AVG)
SMN =.990E-04
SMX =2.579
.990E-04
.129032
.257964
.386897
.51583
.644763
.773695
.902628
1.032
1.16
1.289
1.418
1.547
1.676
1.805
1.934
2.063
2.192
2.321
2.45
2.579



```

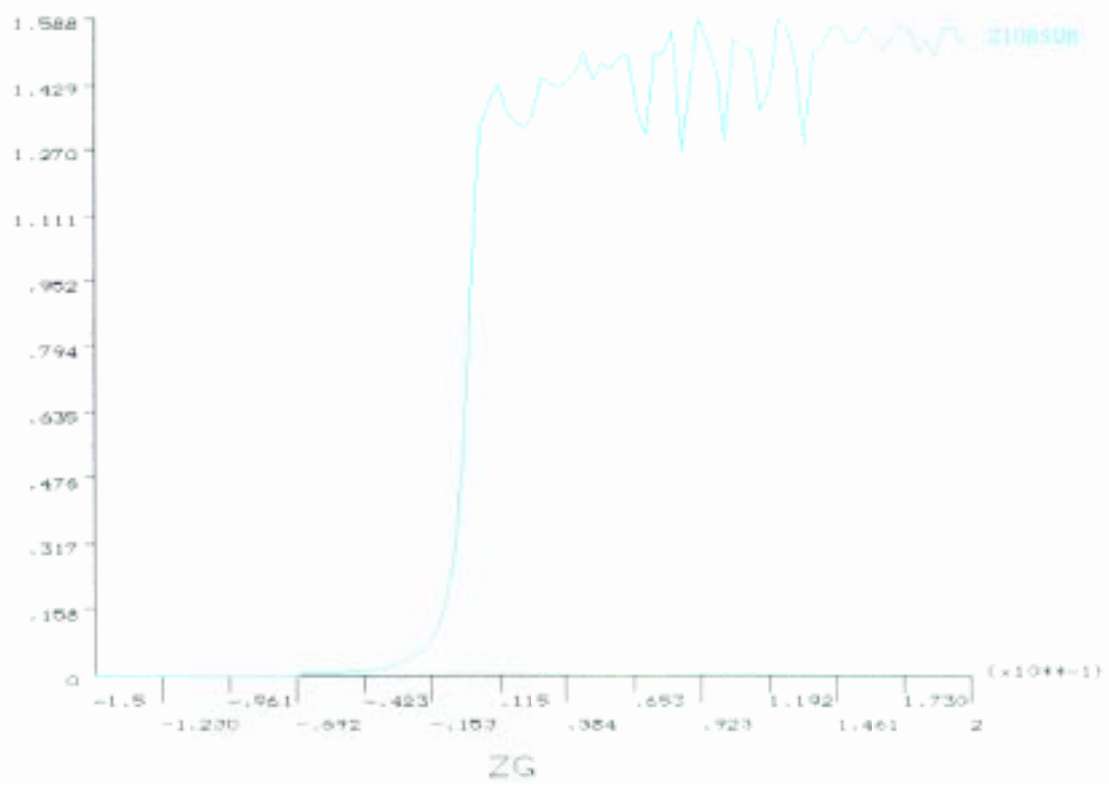
ANSYS 5.4
JUN 28 1999
14:08:45
AVG ELEMENT SOLUTIC
STEP=1
SUB =1
TIME=1
BSUM      (AVG)
SMN =.419E-04
SMX =2.253

XV =-.6027
YV =-.1691
ZV =-.7798
*DIST=-.009615
*XF =.106121
*YF =-.026551
*ZF =.066311
A-ZS=-17.58
Z-BUFFER

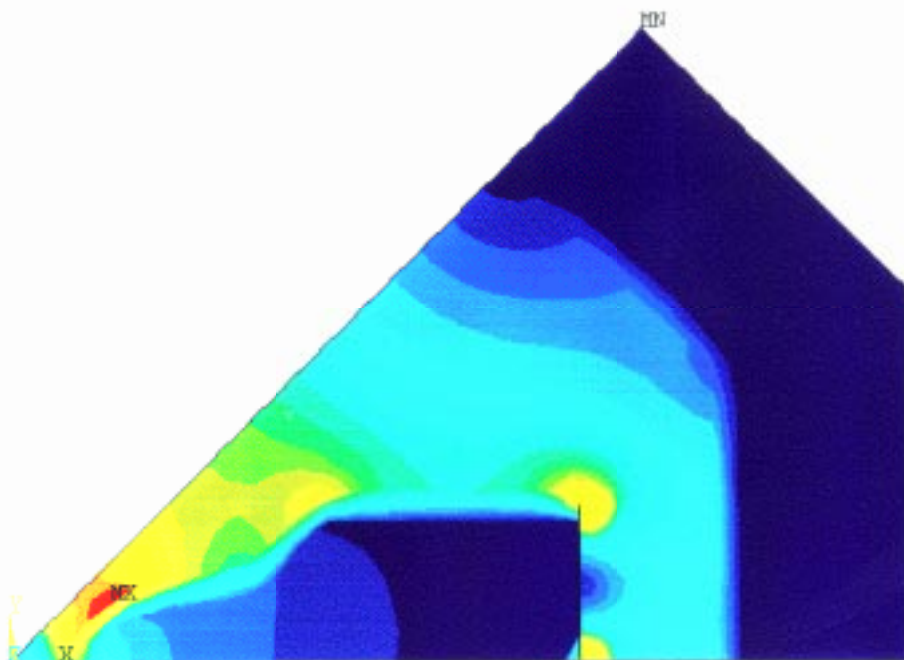
```

■	.419E-04
■	.25033
■	.500617
■	.750905
■	1.001
■	1.251
■	1.502
■	1.752
■	2.002
■	2.253



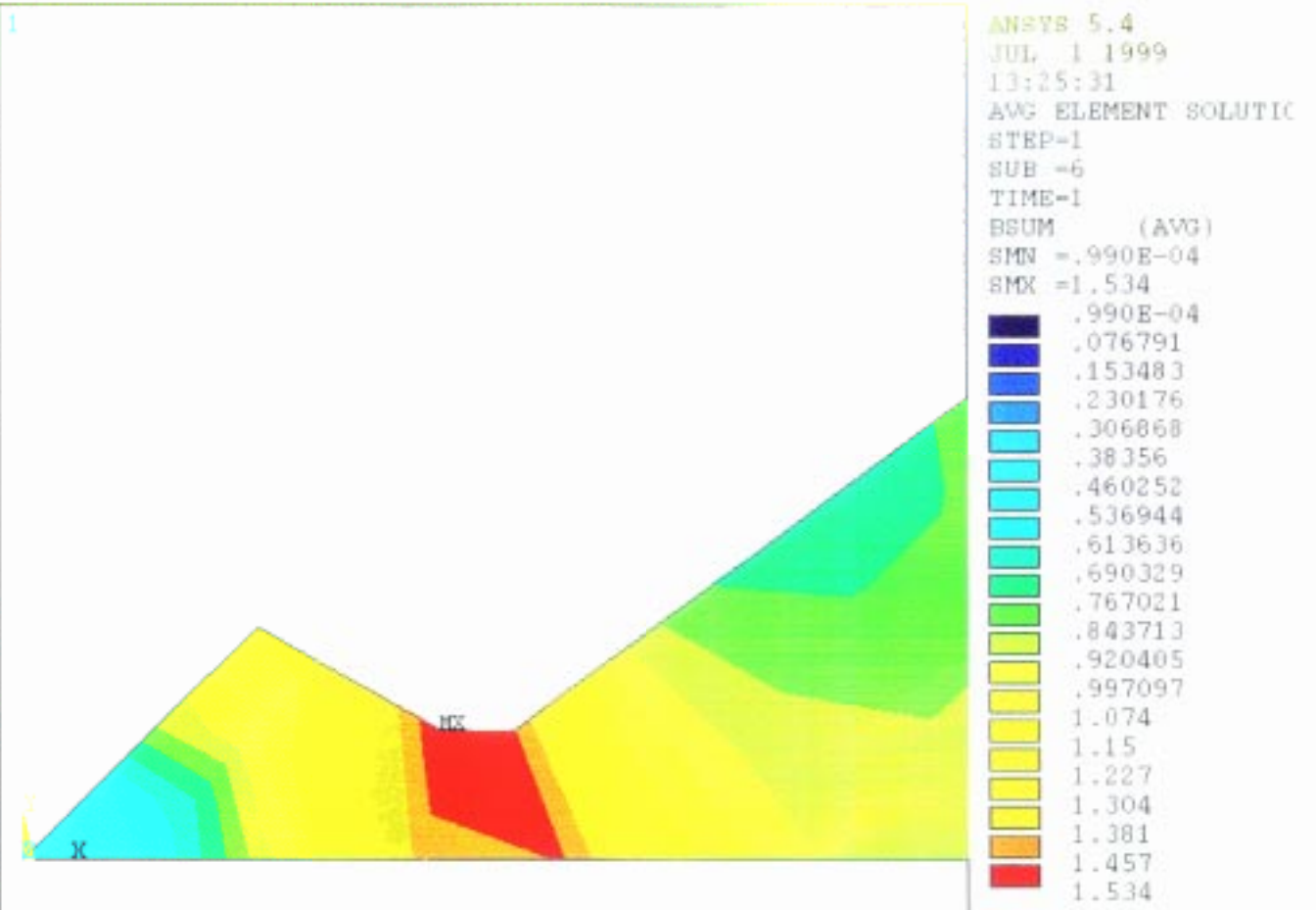


1



ANSYS 5.4
JUL 1 1999
12:00:25
AVG ELEMENT SOLUTIC
STEP=1
SUB =1
TIME=1
BSUM (AVG)
SMN =.101E-04
SMX =6.448

■	.101E-04
■	.322412
■	.644814
■	.967216
■	1.29
■	1.612
■	1.934
■	2.257
■	2.579
■	2.902
■	3.224
■	3.546
■	3.869
■	4.191
■	4.514
■	4.836
■	5.158
■	5.481
■	5.803
■	6.126
■	6.448



1

```
ANSYS 5.4
JUN 28 1999
14:23:13
AVG ELEMENT SOLUTIC
STEP=1
SUB =1
TIME=1
BSUM      (AVG)
SMN  =.419E-04
SMX  =1.215

XV  =-.2303
YV  =-.6716
ZV  =.7042
*DIST=.034638
*XF  =-.004864
*YF  =-.010658
*ZF  =.013956
A-ZS=-62.44
Z-BUFFER
      .419E-04
      .135011
      .26998
      .404949
      .539918
      .674887
      .809855
      .944824
      1.08
      1.215
```

