

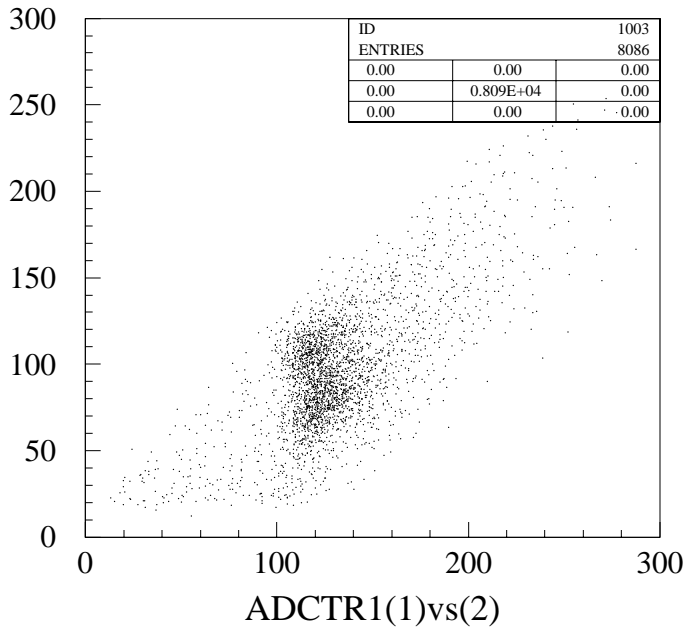
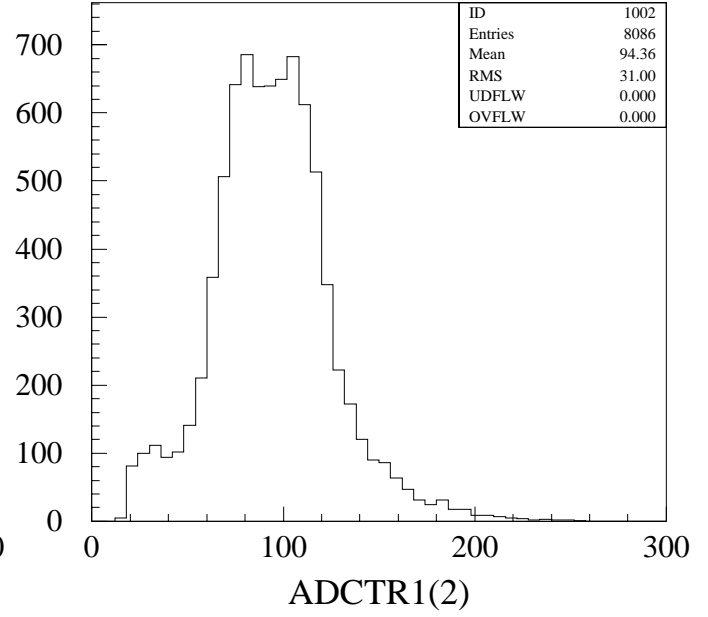
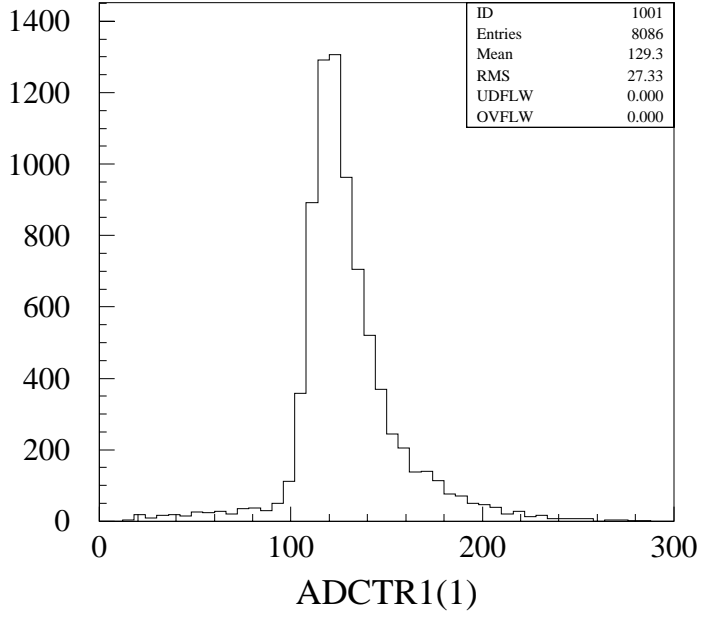
Problems on T1, T2, and T3 in T517

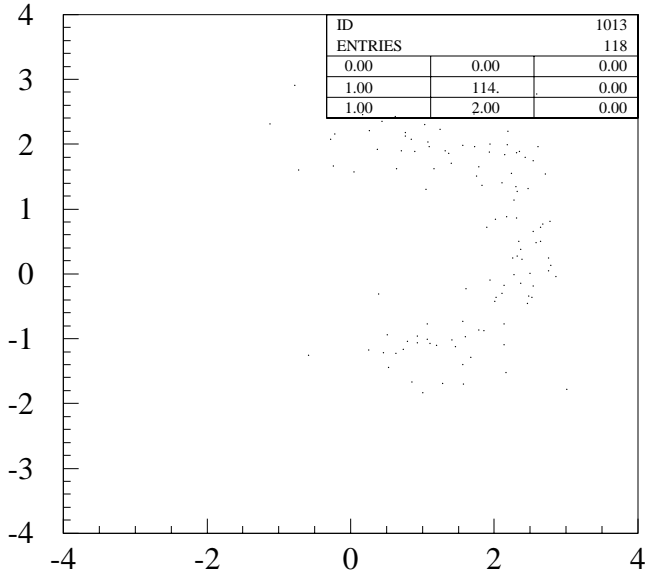
2002/12/17 K.Kawagoe / Kobe-U

- T1L : funny ADC distribution
 - Badly glued PMT (very sorry ...)
- T3L : TDC problems
 - T3L : TDC problems
 - No hit before run00192 (input width too narrow)
 - Jump/drift remained...
 - Because of bad Discr or TDC ?? (still unclear)
- T3L : gain jump
 - jump between 394 and 395 (~ doubled)
 - Reason unknown : HV ? Termination ??
- TDCTR3(1)-TDCTR1(1) is stable.

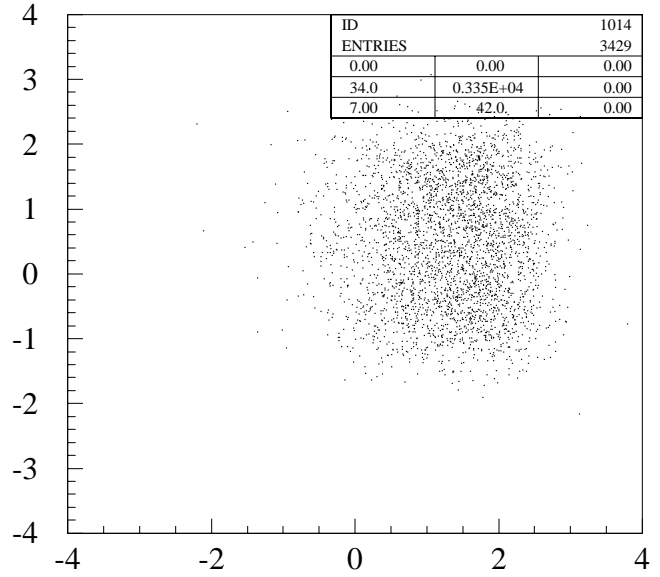
Badly glued PMT



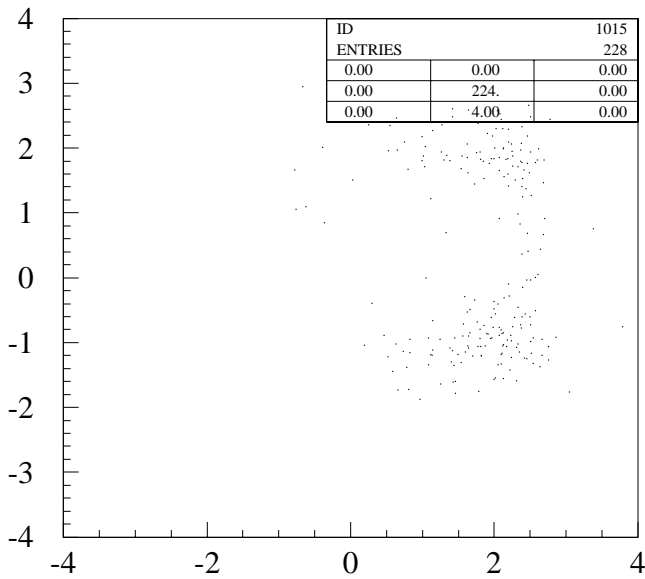




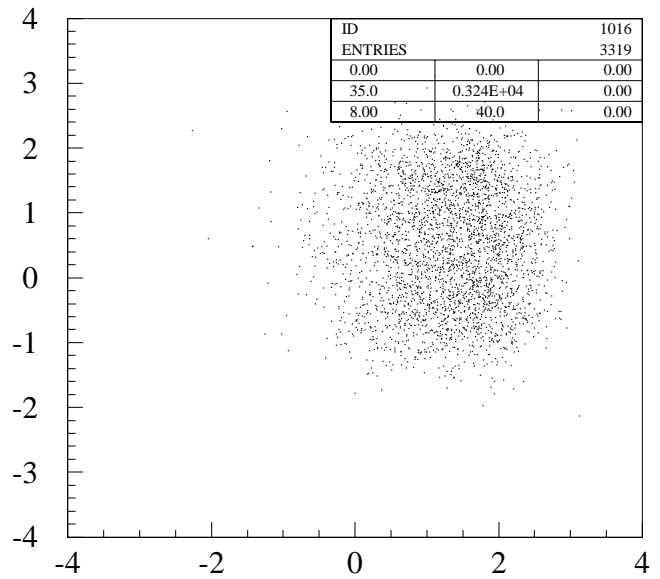
TR1-pos (a)



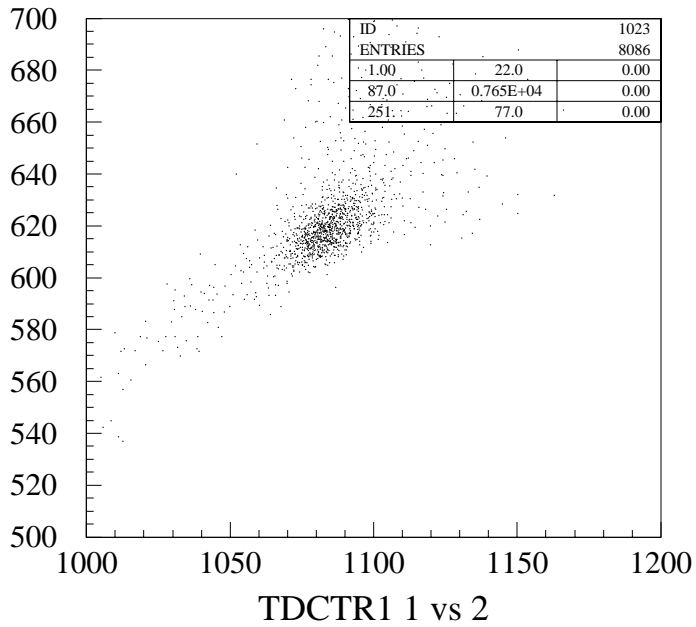
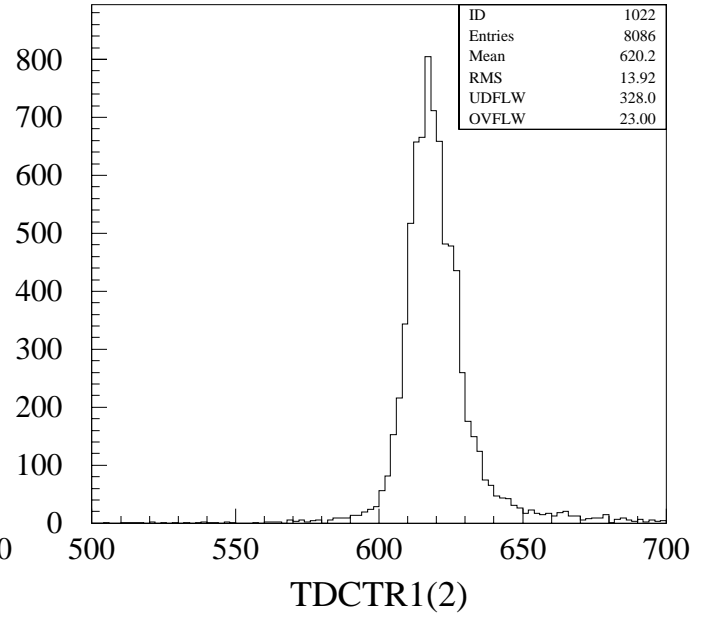
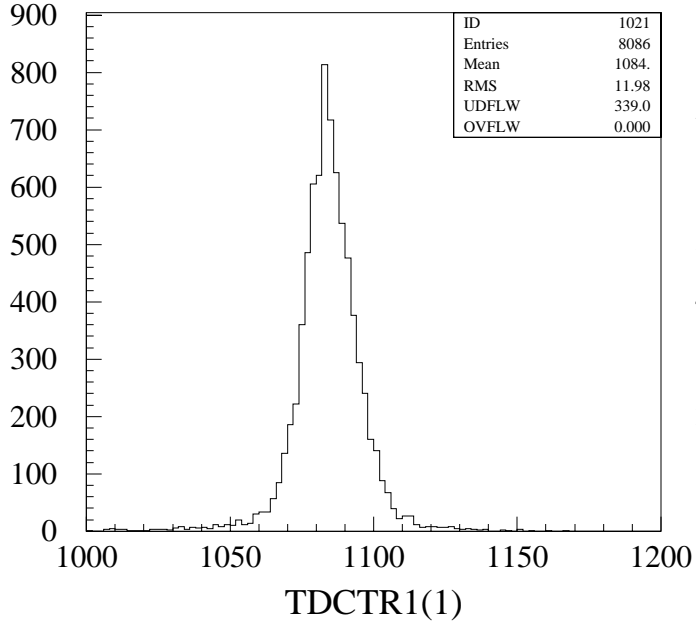
TR1-pos (b)

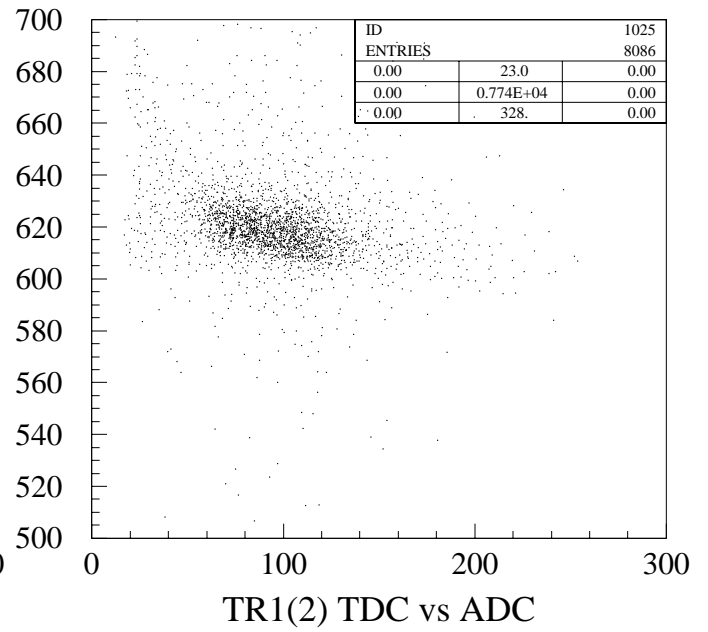
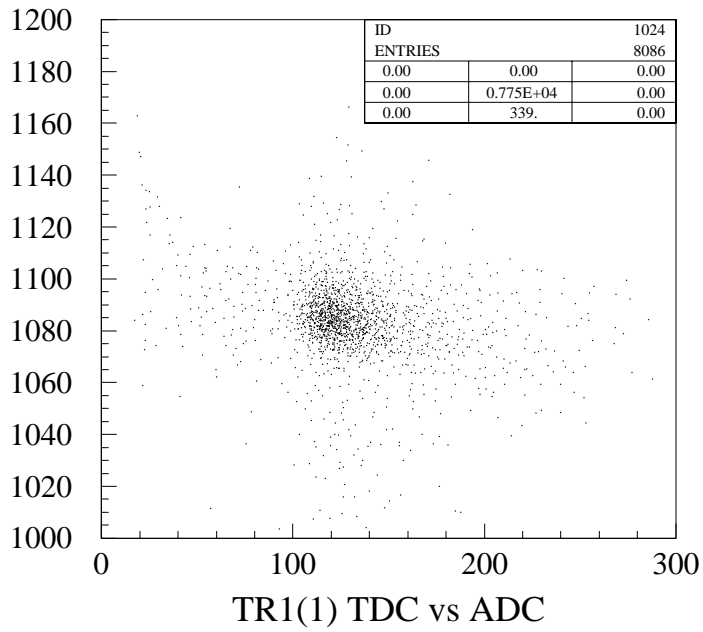


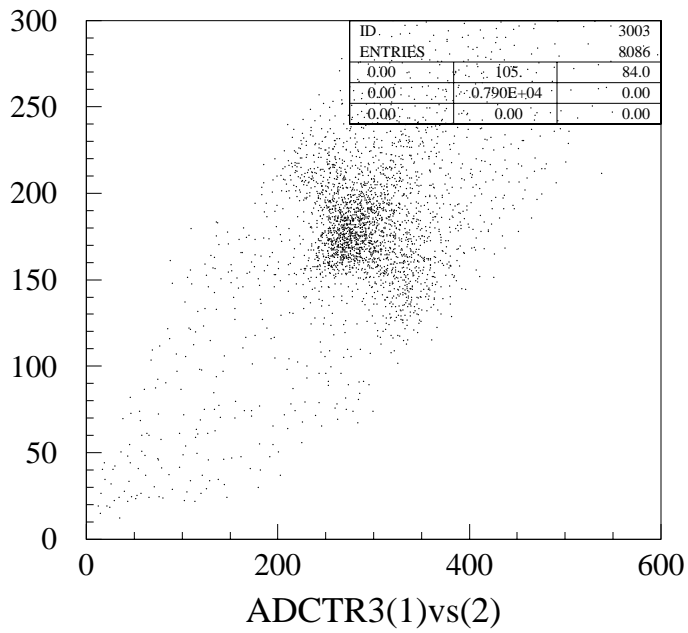
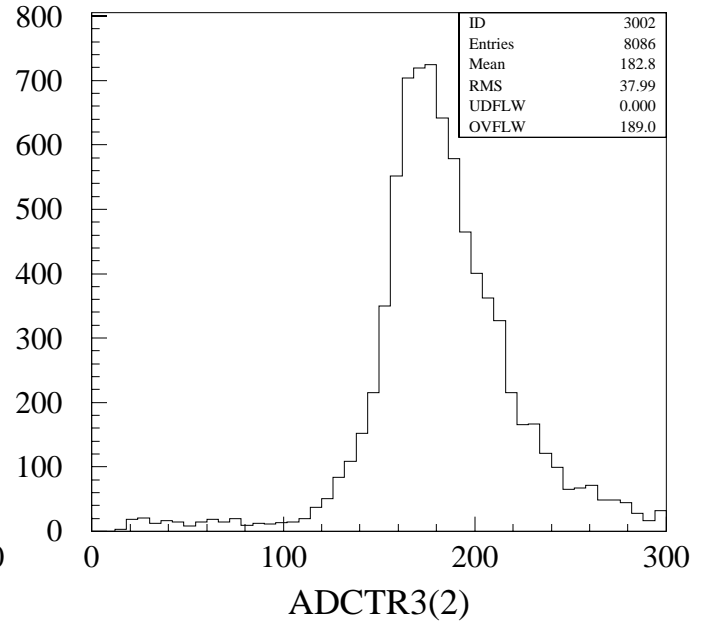
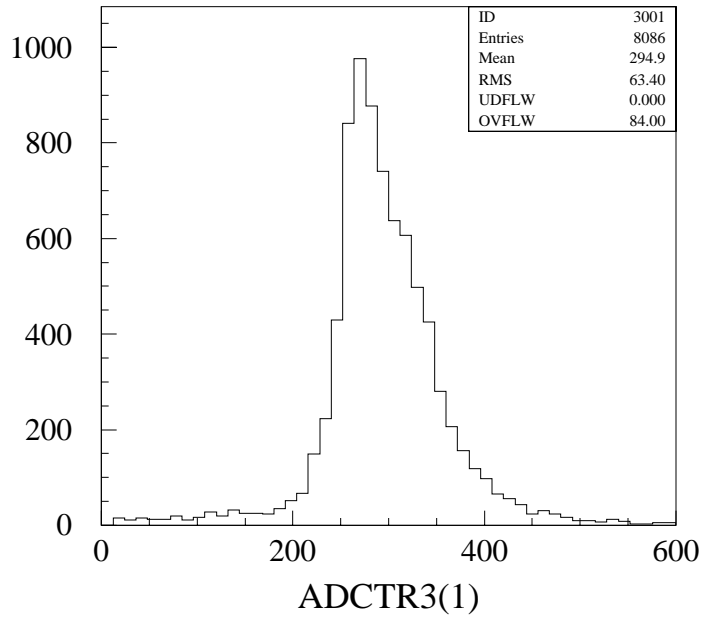
TR1-pos (c)

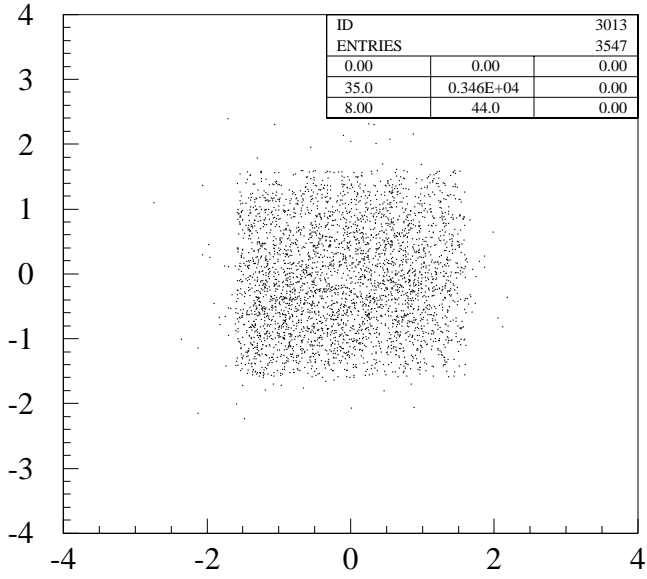


TR1-pos (d)

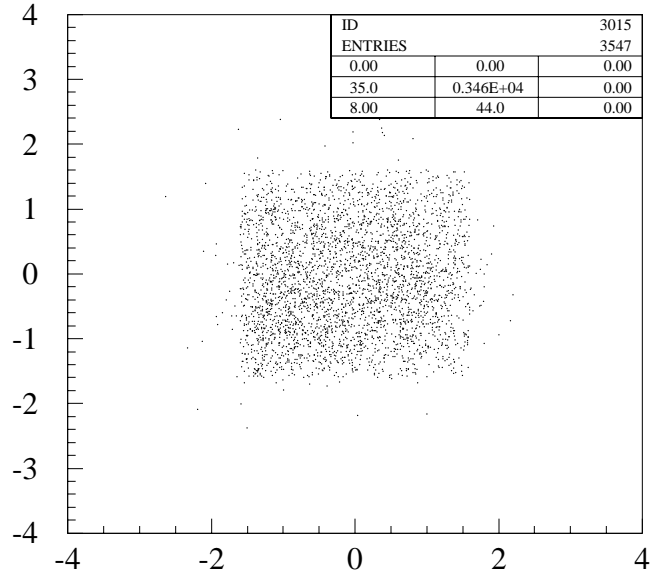




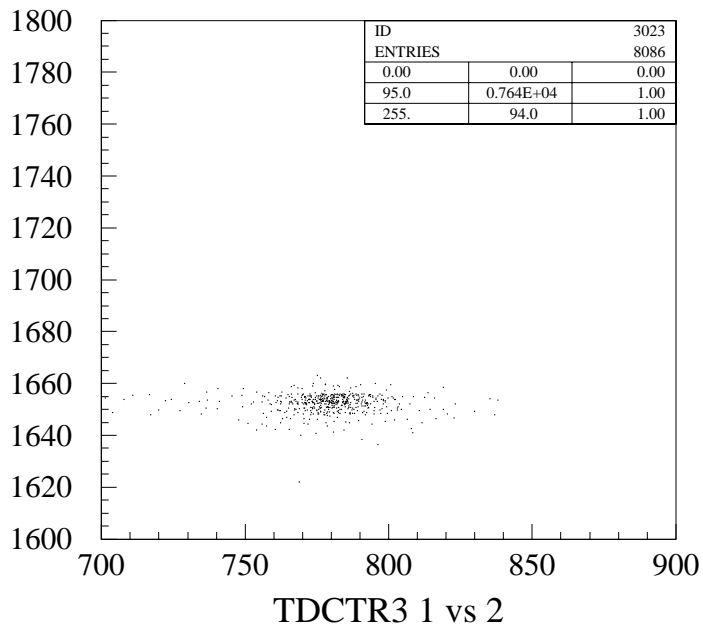
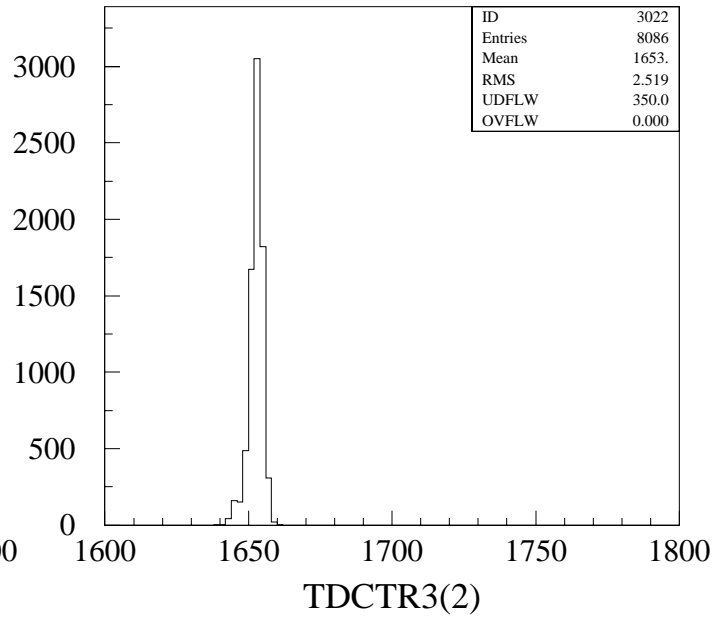
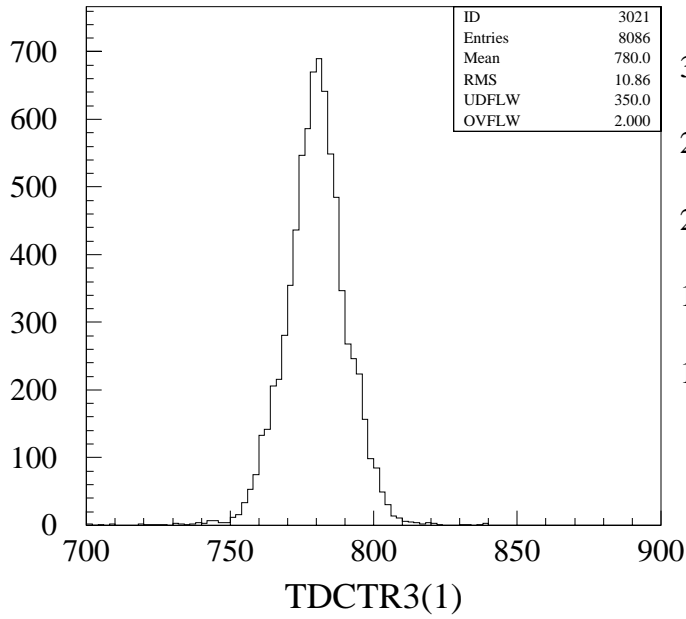


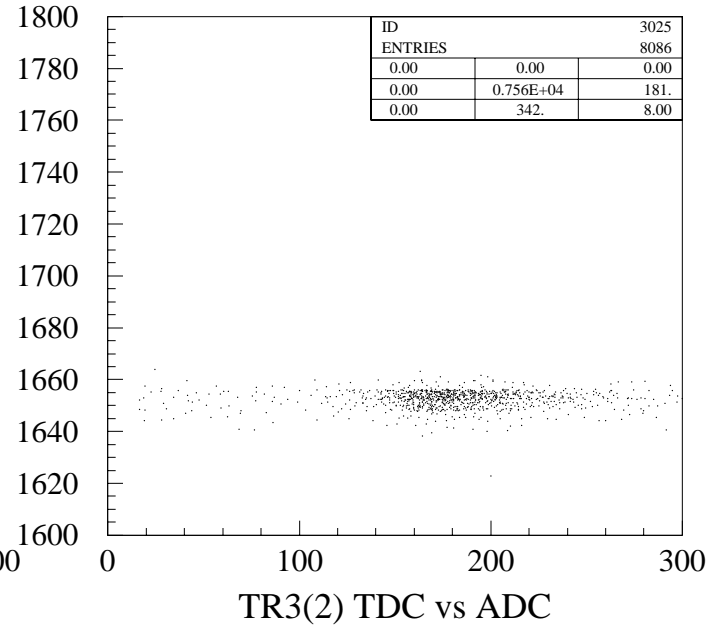
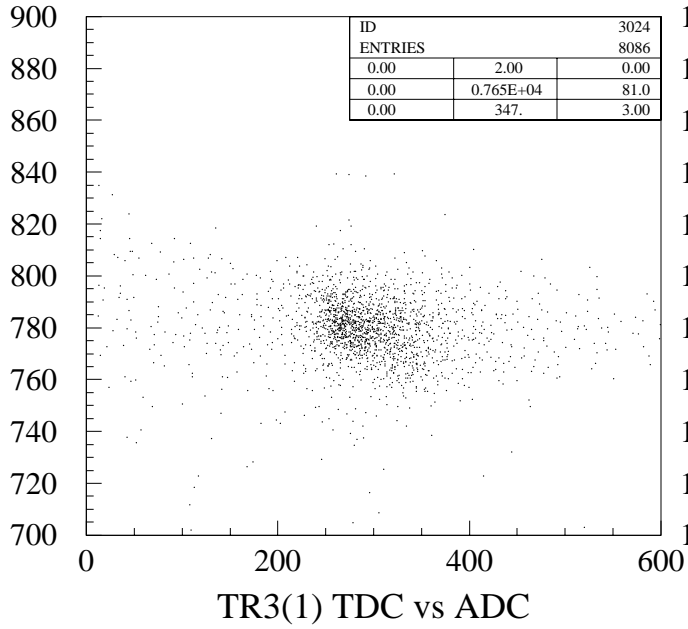


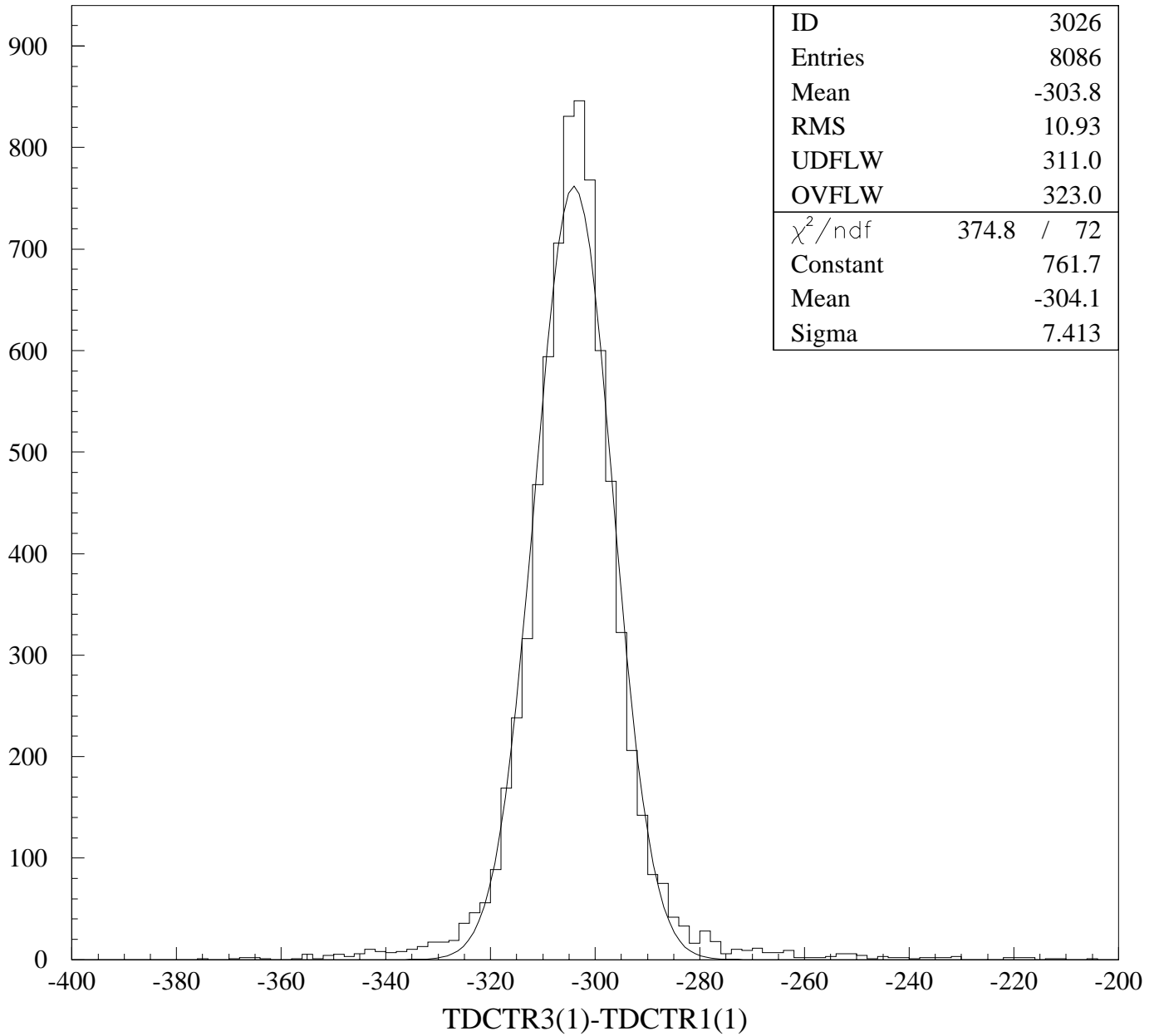
TR3-pos (a)

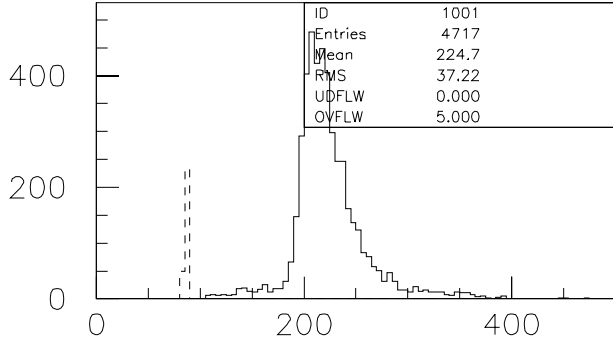


TR3-pos (c)

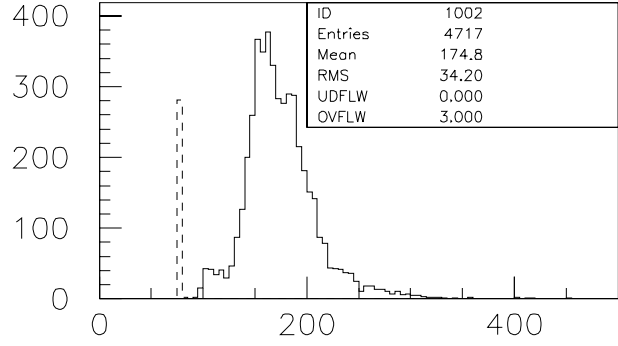




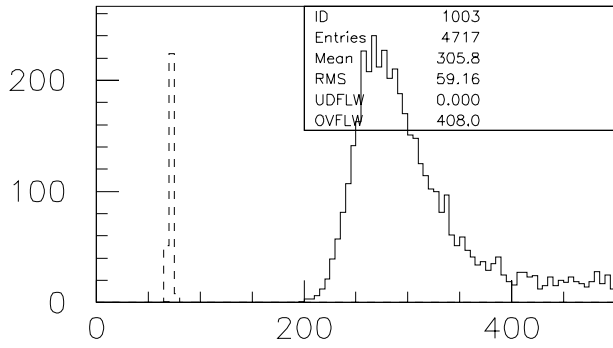




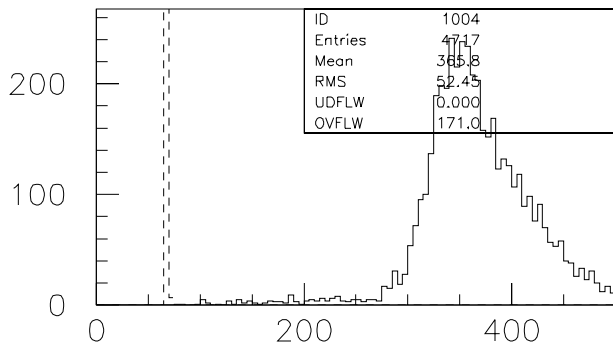
adctr1R



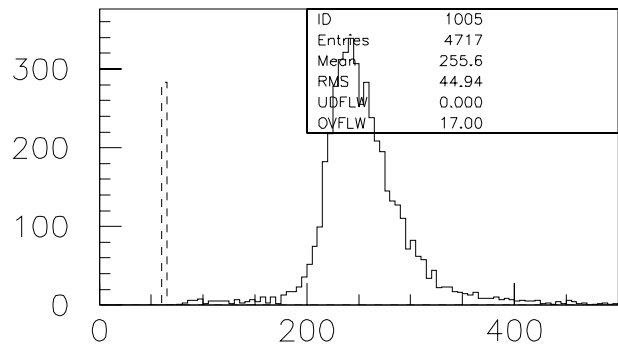
adctr1L



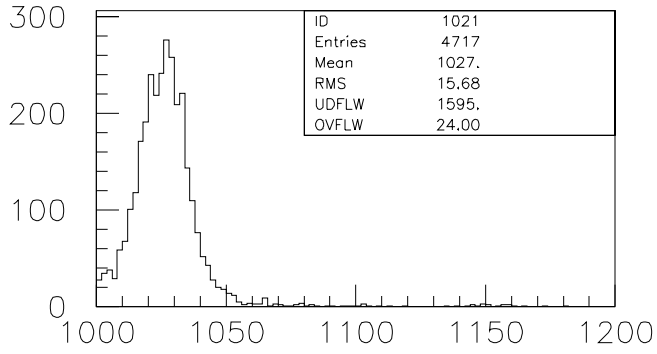
adctr2



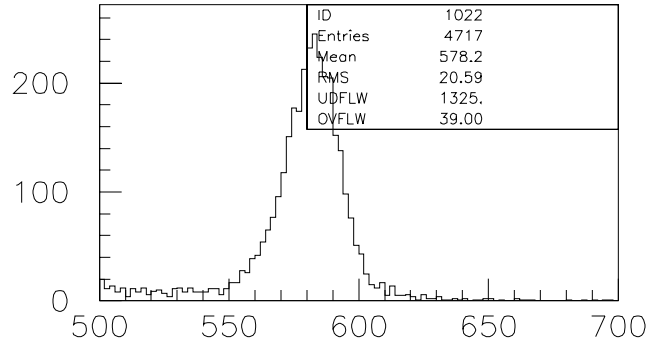
adctr3R



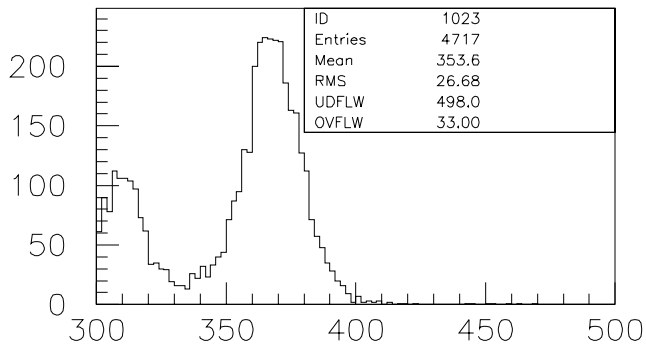
adctr3L
ADC-00163



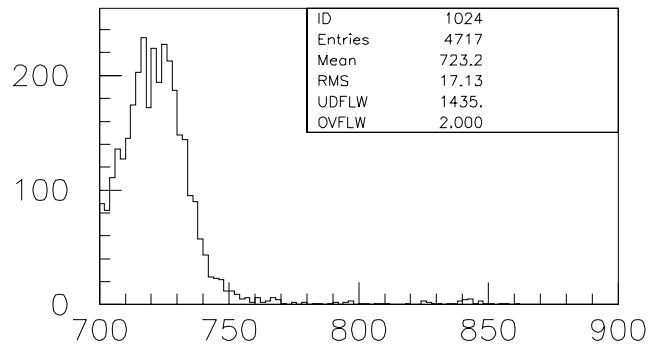
tdctr1R



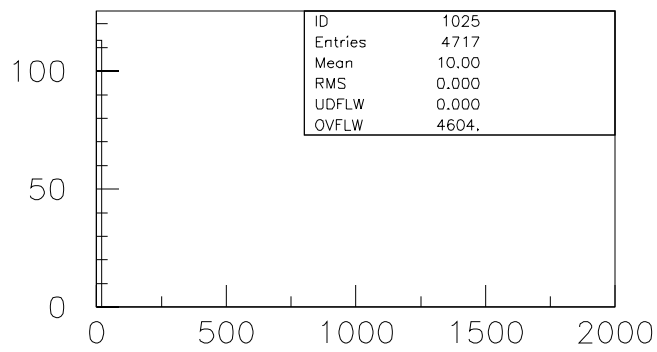
tdctr1L



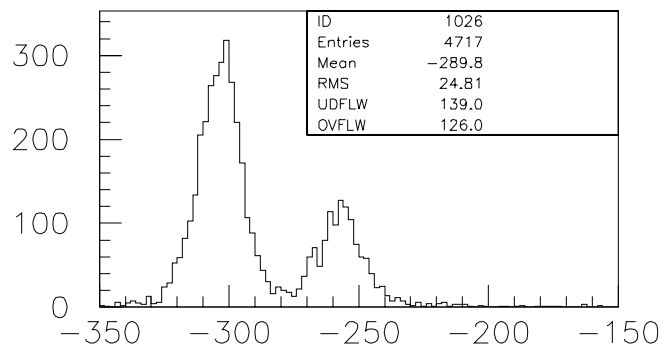
tdctr2



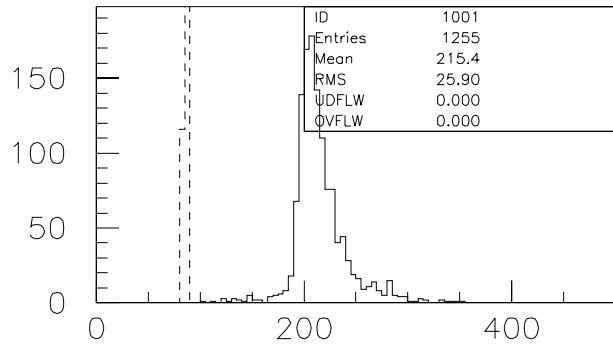
tdctr3R



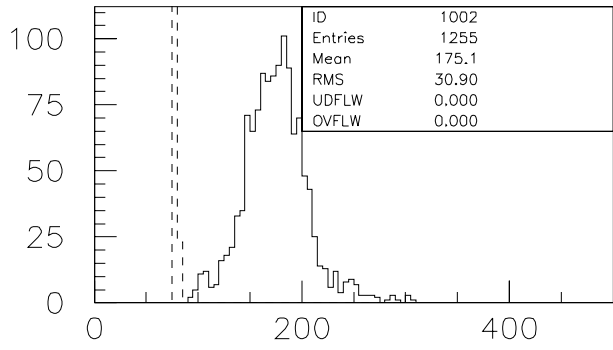
tdctr3L



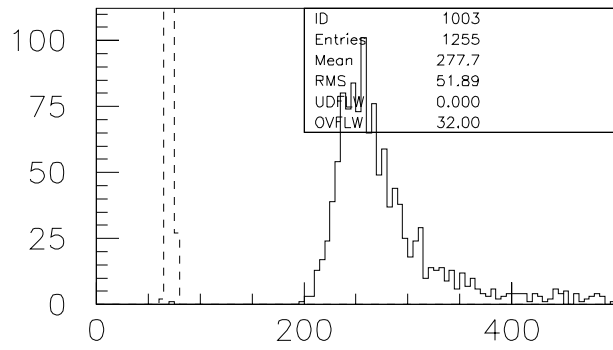
T3R-T1R
TDC-00163



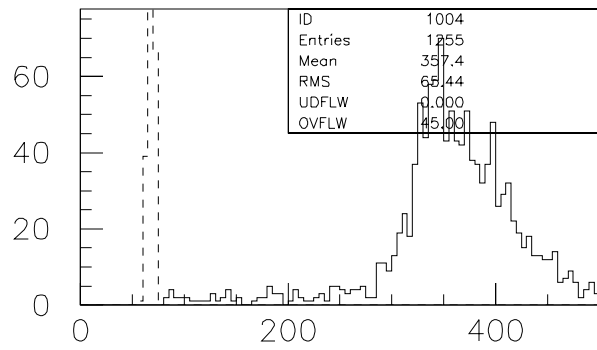
adctr1R



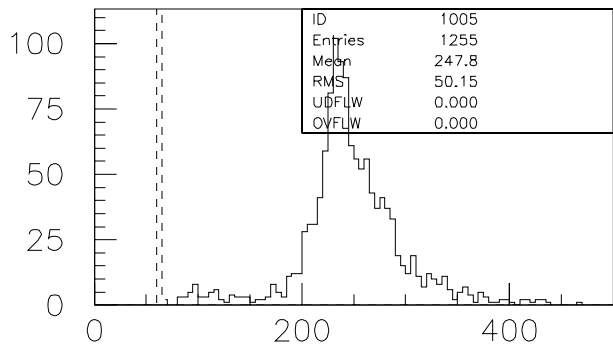
adctr1L



adctr2

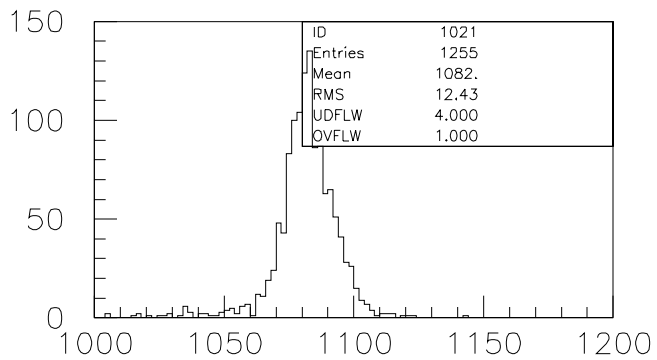


adctr3R

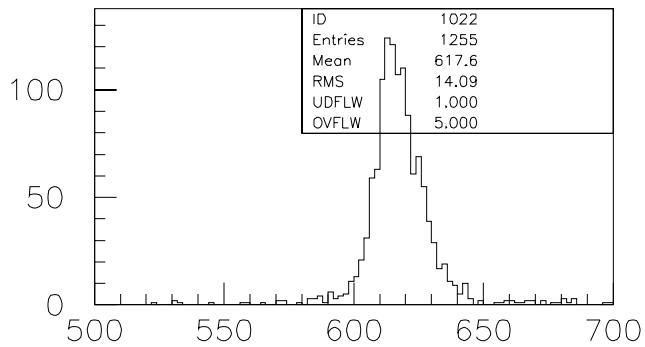


adctr3L

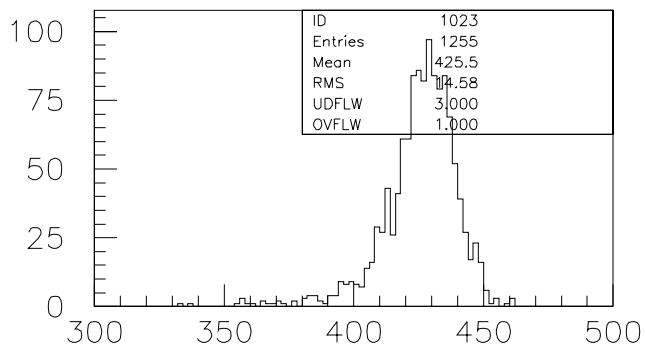
ADC-00300



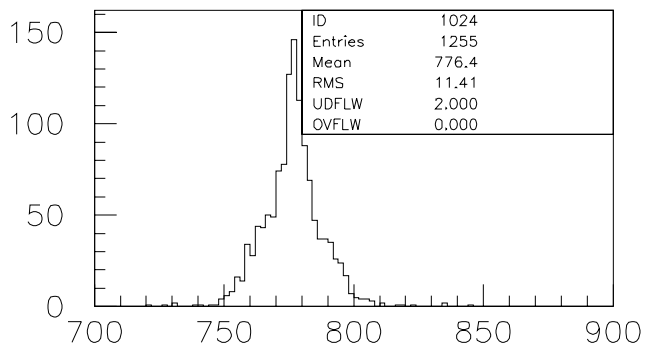
tdctr1R



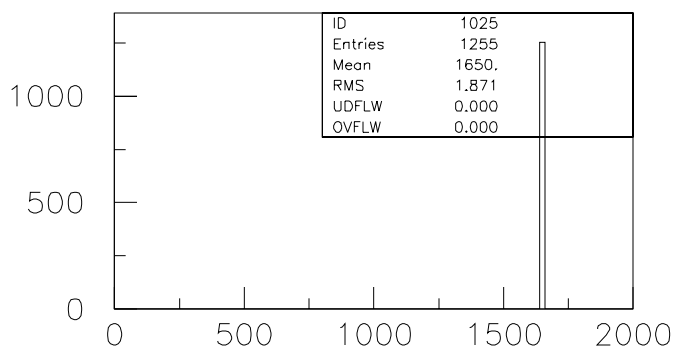
tdctr1L



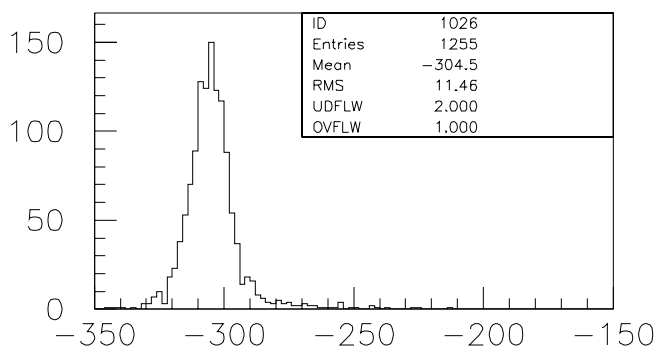
tdctr2



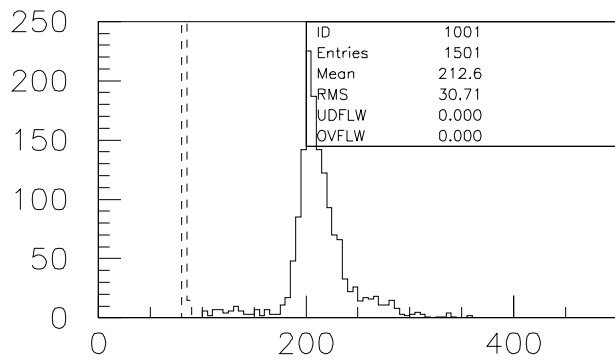
tdctr3R



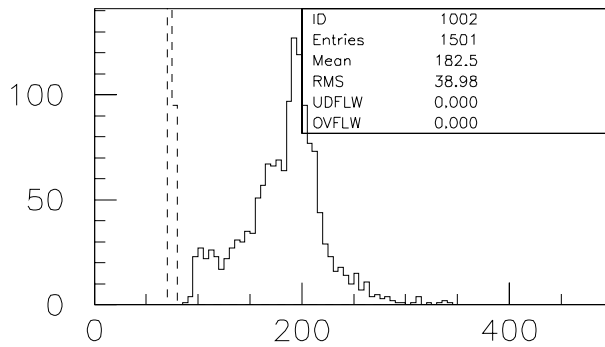
tdctr3L



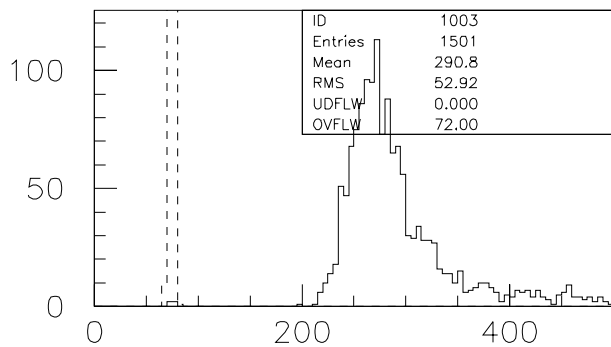
T3R-T1R
TDC-00300



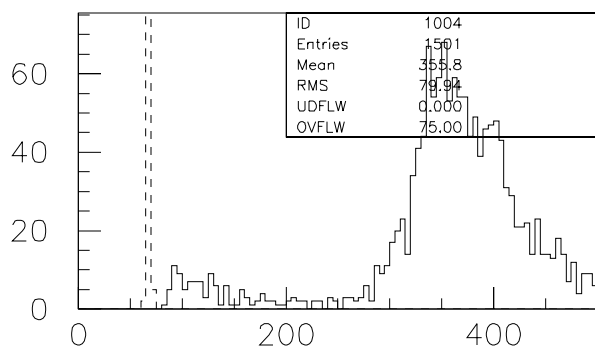
adctr1R



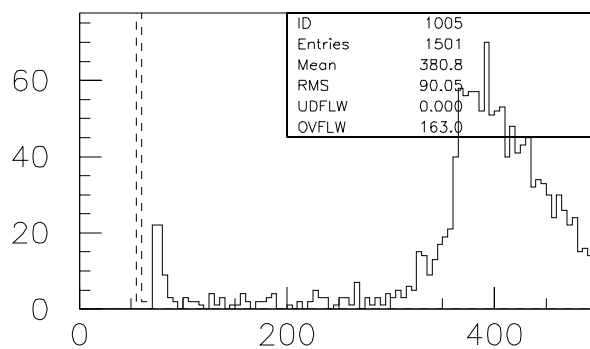
adctr1L



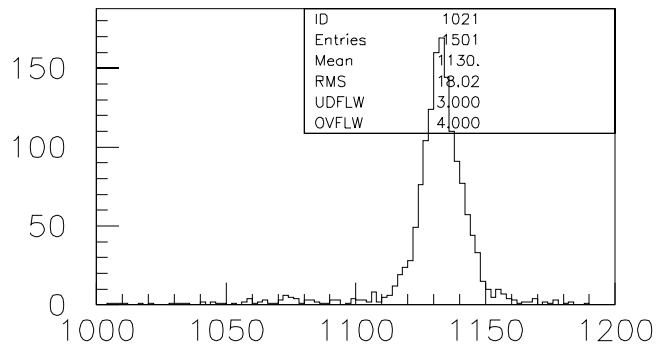
adctr2



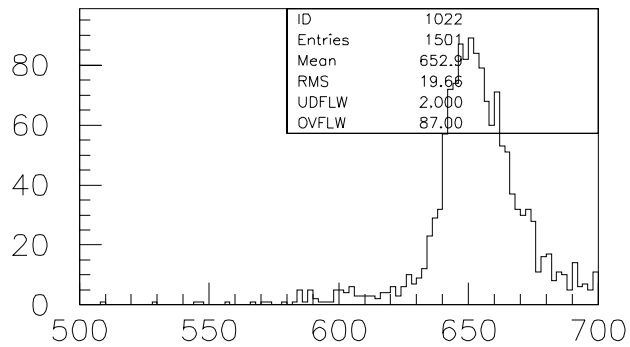
adctr3R



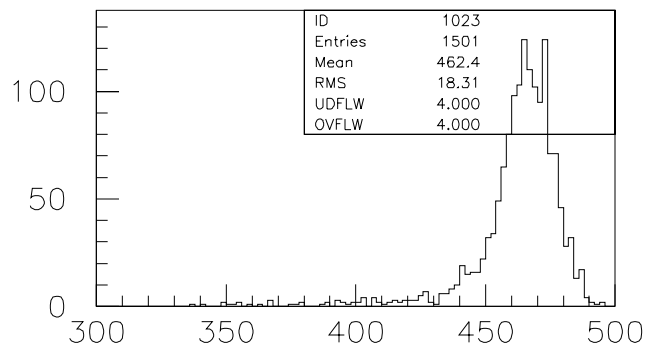
adctr3L
ADC-00476



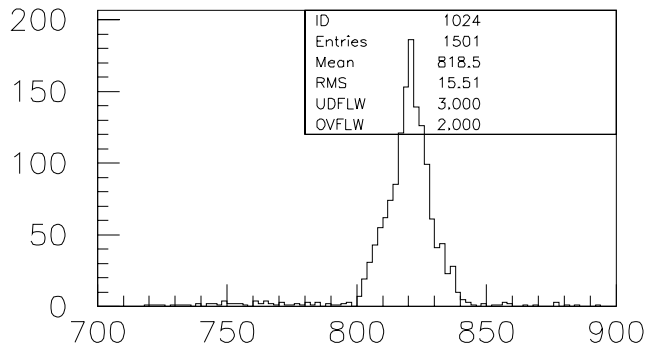
tdctr1R



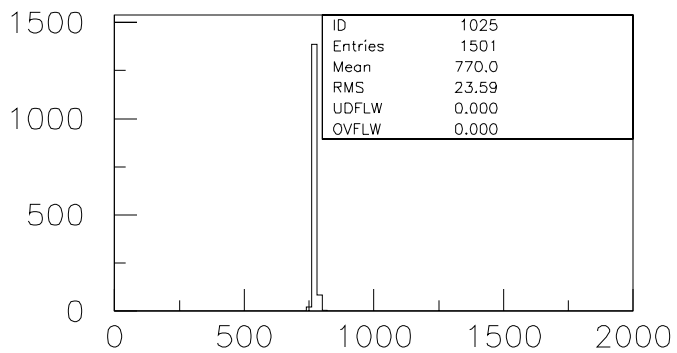
tdctr1L



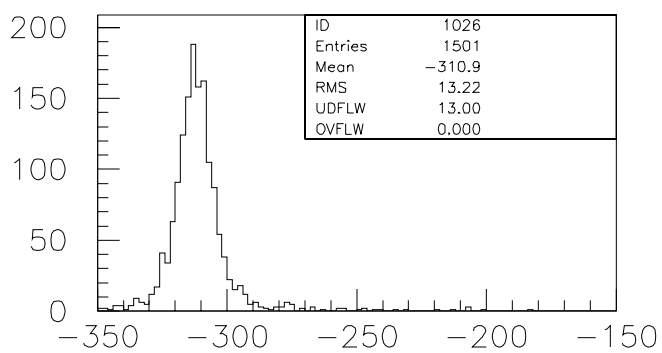
tdctr2



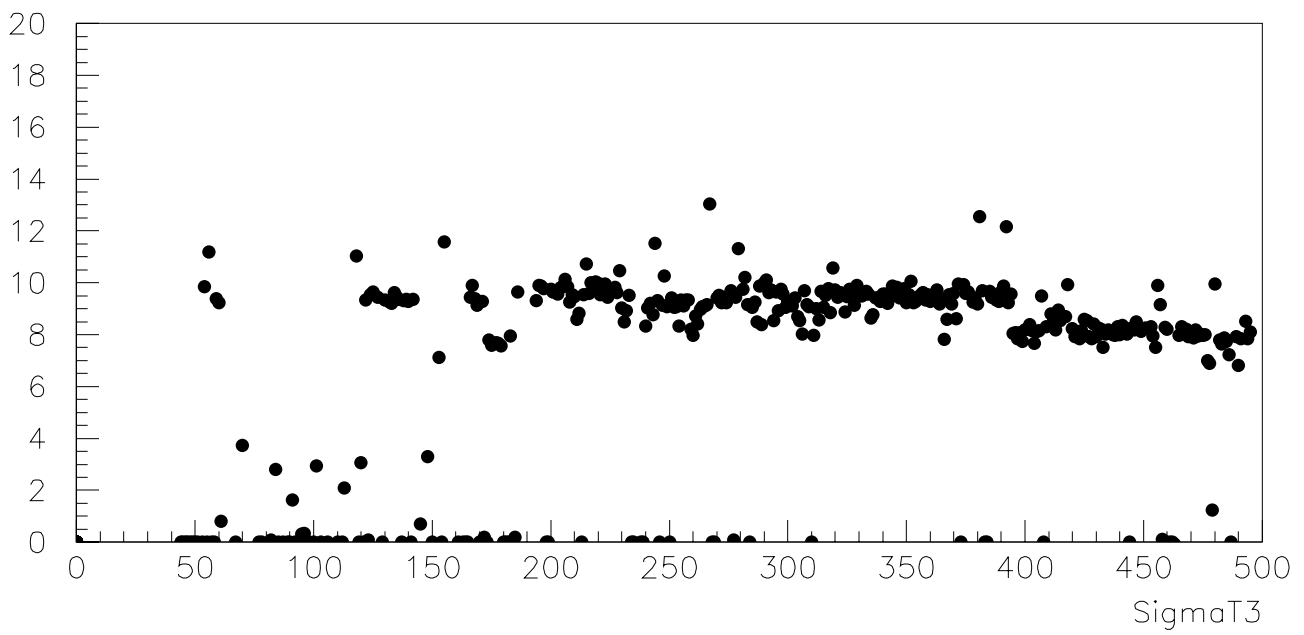
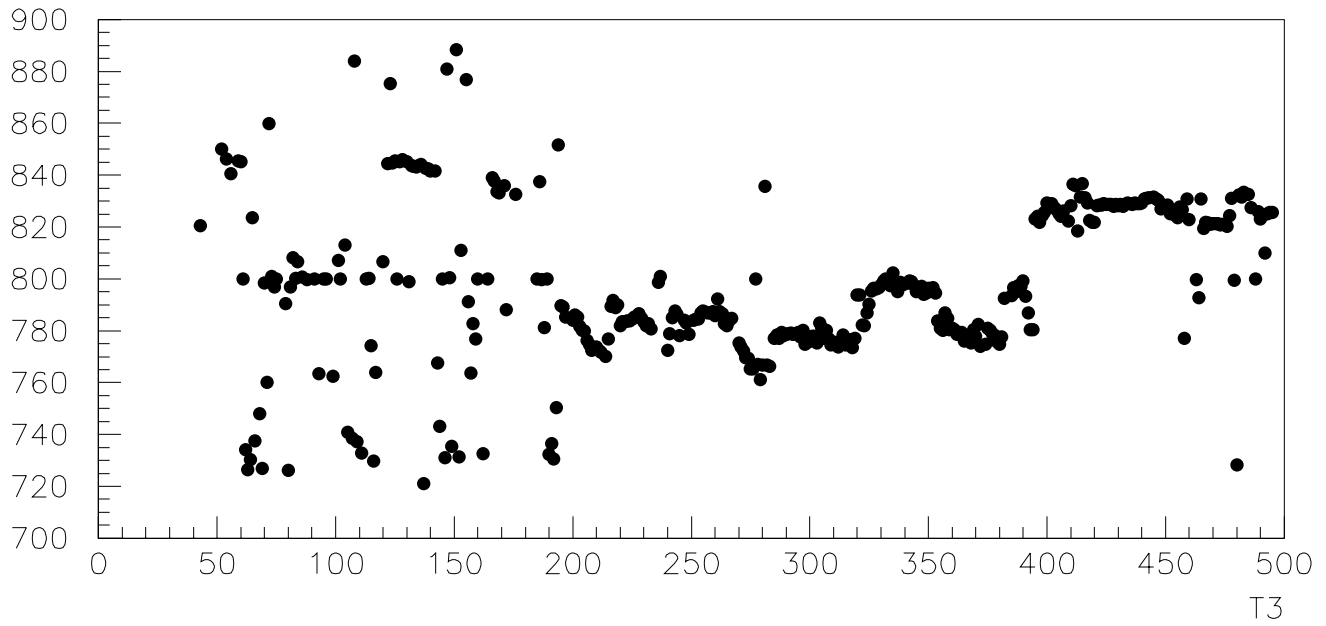
tdctr3R

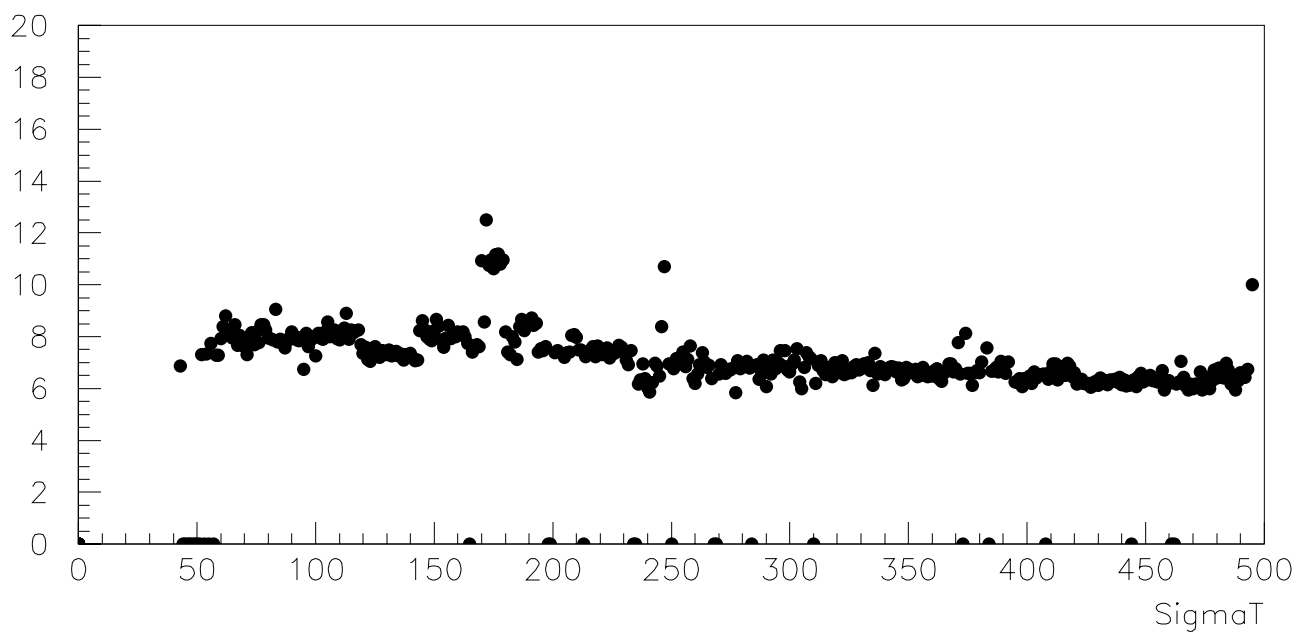
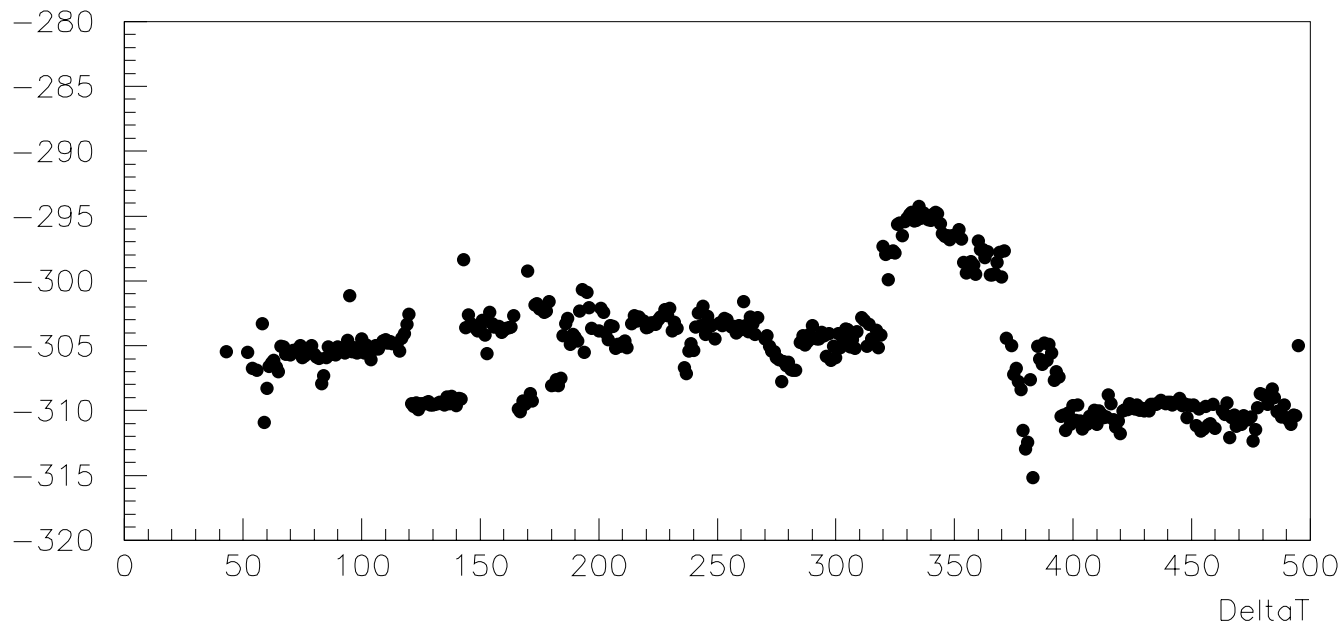


tdctr3L



T3R-T1R
TDC-00476

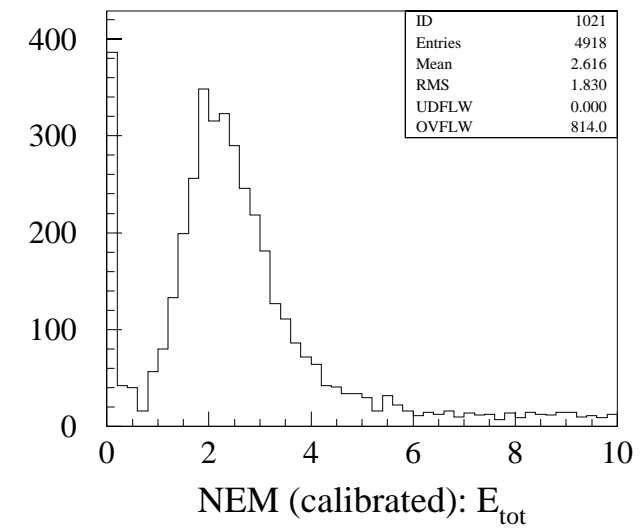
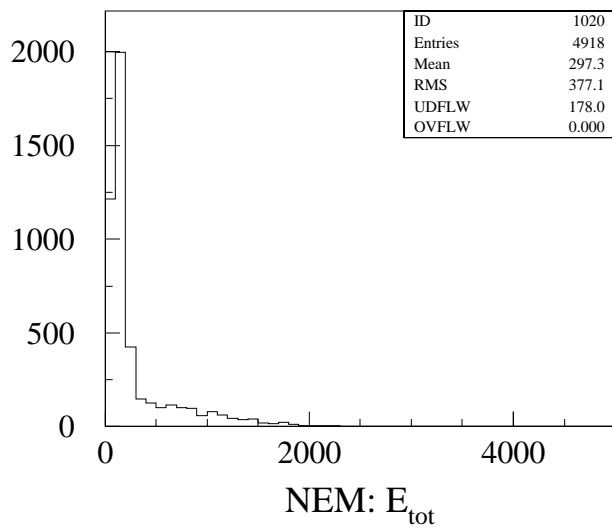
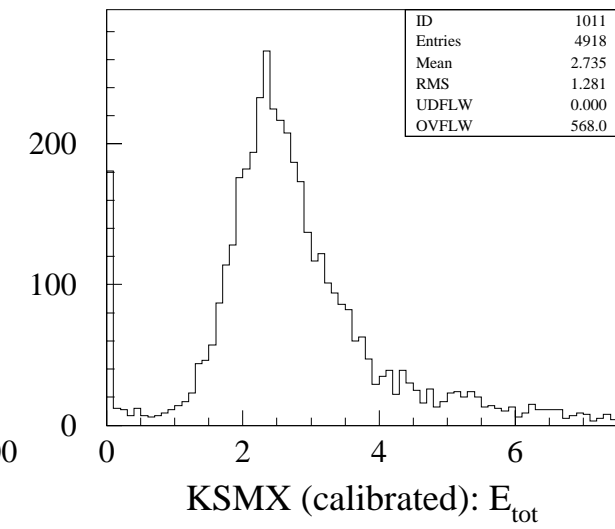
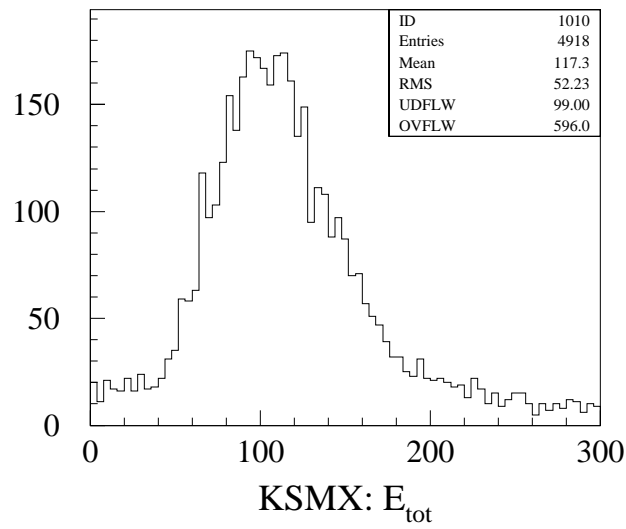
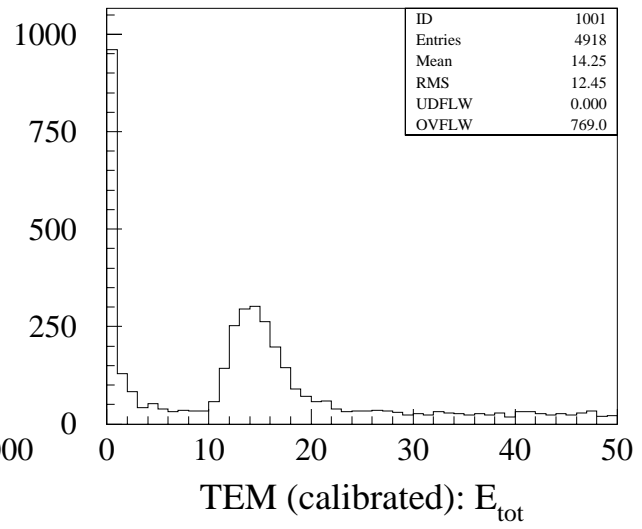
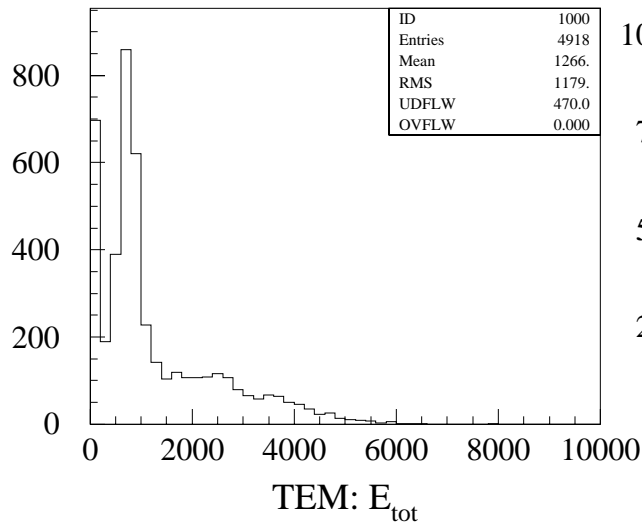


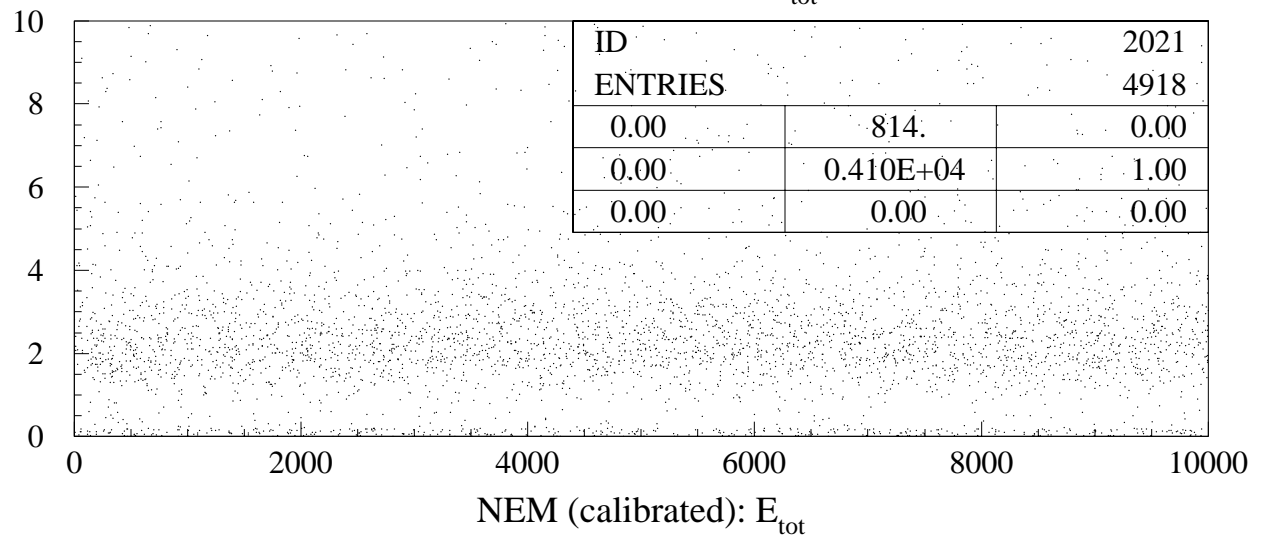
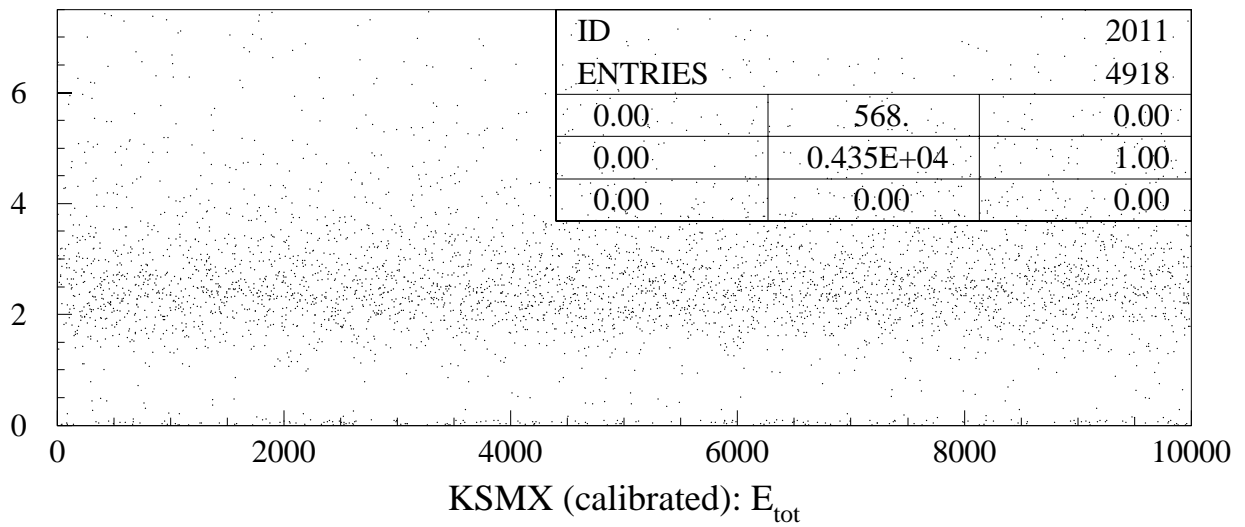
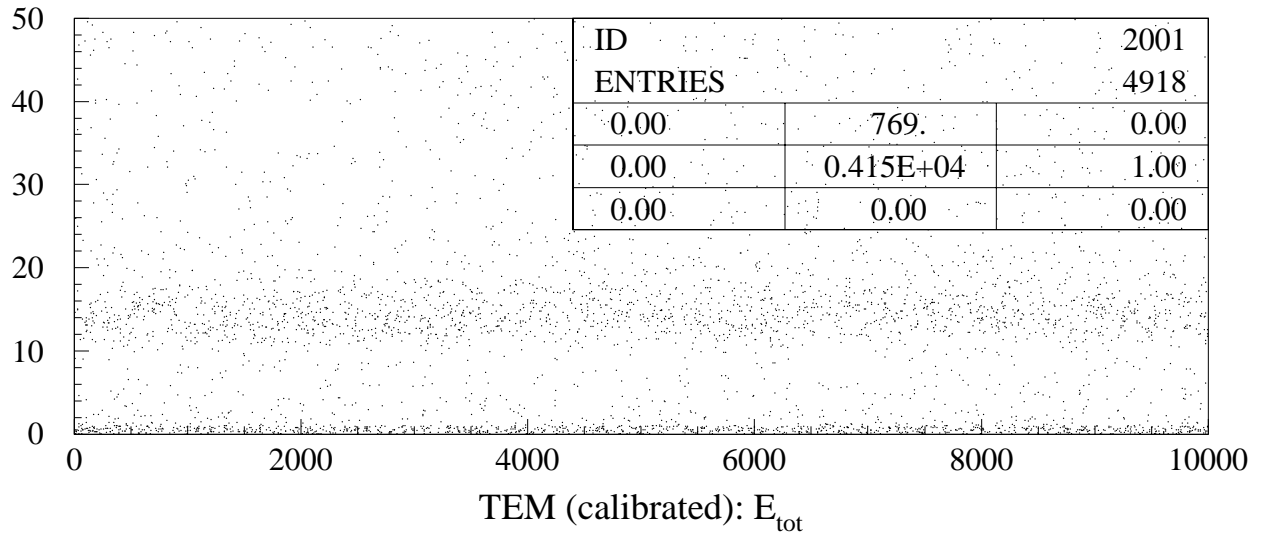


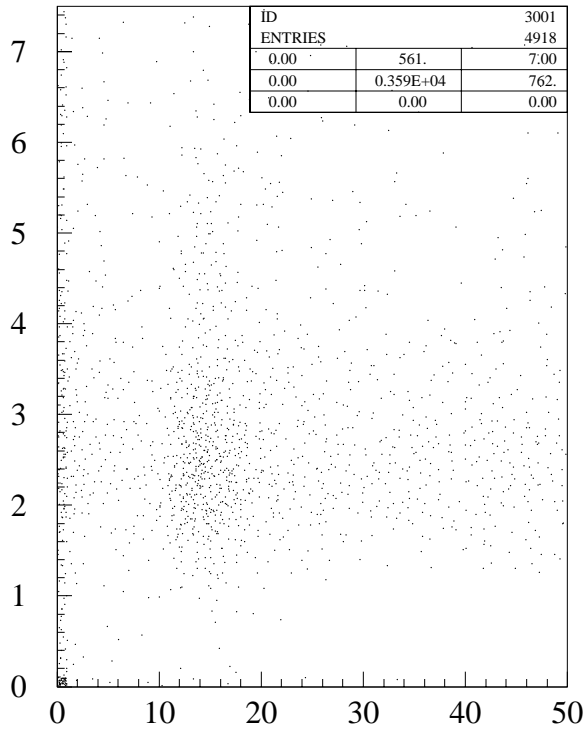
TOFの計算

TDC 1count=1/23=0.0435ns

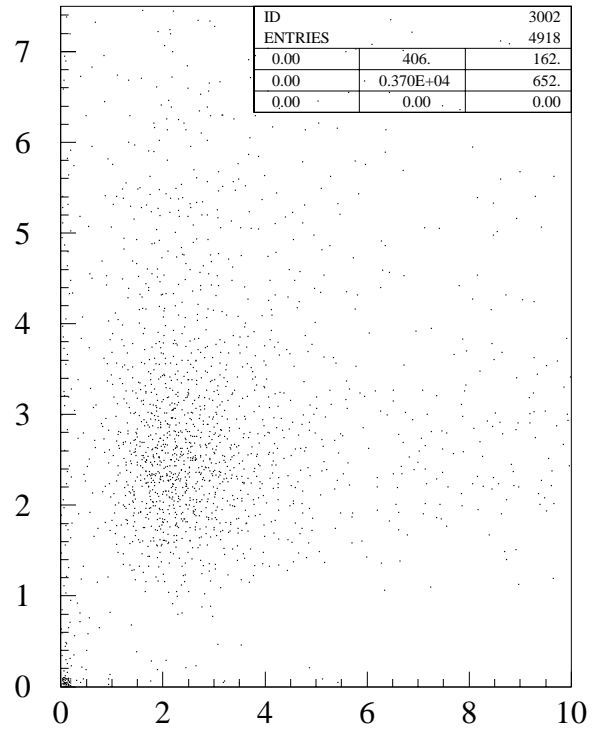
mass (GeV)	L (m)	P (GeV)	beta	t (ns)	Delta t (ns)	Delta TDC
0.0005	6.95	1	1.0000	23.167		
0.105	6.95	1	0.9945	23.294		
0.14	6.95	1	0.9903	23.393	0.226	5.20
0.938	6.95	1	0.7294	31.763	8.371	192.52
0.0005	6.95	2	1.0000	23.167		
0.105	6.95	2	0.9986	23.199		
0.14	6.95	2	0.9976	23.223	0.057	1.30
0.938	6.95	2	0.9054	25.588	2.365	54.39
0.0005	6.95	3	1.0000	23.167		
0.105	6.95	3	0.9994	23.181		
0.14	6.95	3	0.9989	23.192	0.025	0.58
0.938	6.95	3	0.9544	24.273	1.081	24.86
0.0005	6.95	4	1.0000	23.167		
0.105	6.95	4	0.9997	23.175		
0.14	6.95	4	0.9994	23.181	0.014	0.33
0.938	6.95	4	0.9736	23.795	0.614	14.13



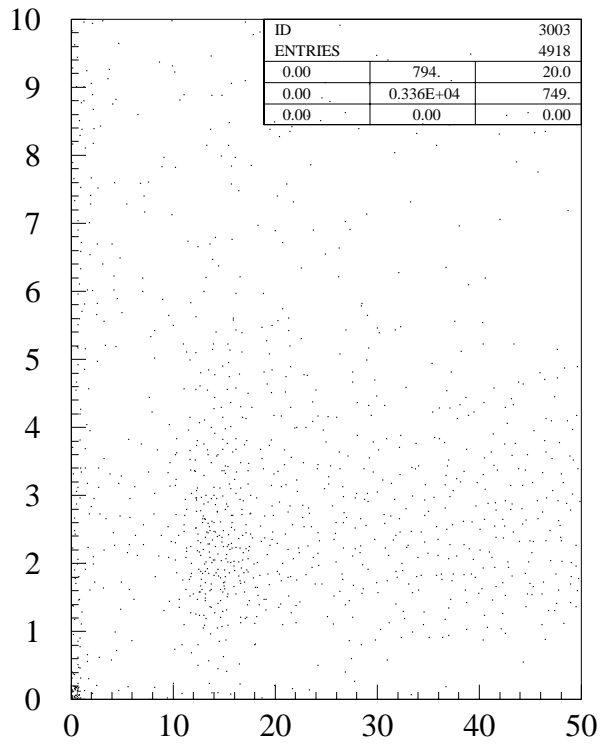




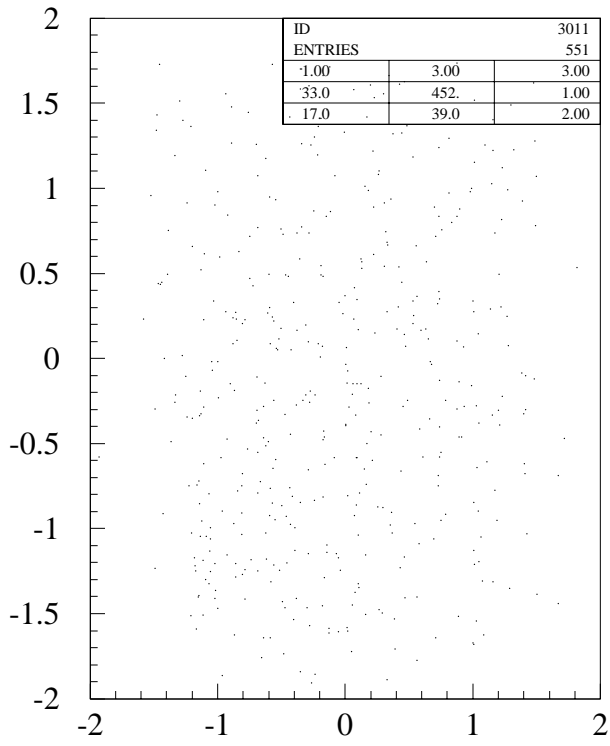
KSMX vs TEM



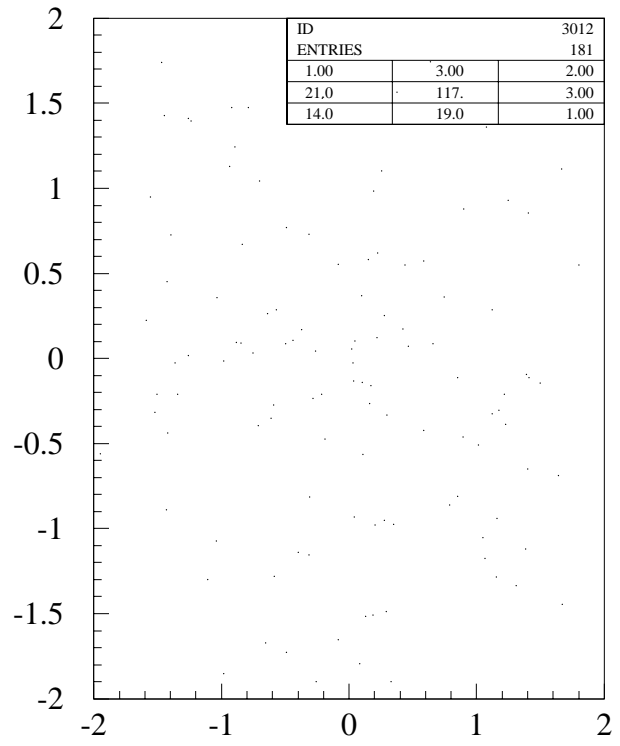
KSMX vs NEM



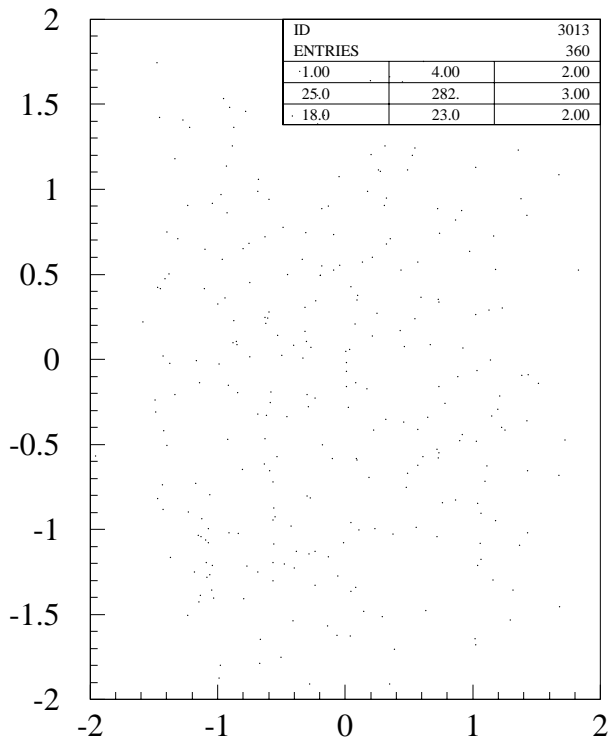
NEM vs TEM



Pos low TEM



Pos low KSMX



Pos low NEM